

2026

FREE

PLEASE TAKE ONE

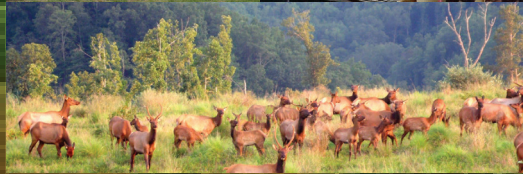
FREE

2026

# EASTERN KENTUCKY VISITORS GUIDE



[WWW.COUNTRYMUSICHIGHWAY.COM](http://WWW.COUNTRYMUSICHIGHWAY.COM)



We're So Glad You're Here  
or Plan to Visit Soon!

published annually

**JLC MEDIA**  
609 Washington Ave.  
Paintsville, Ky.  
41240

606-793-7493

countrymusichighway.  
com

Facebook.com/  
CountryMusicHighway

cmhtravelguide@gmail.

**If it touches tourism  
and any of our visitors,  
we are there to help  
100 percent!**

AN INSIDE  
LOOK AT

THIS ISSUE...

Publisher



*Dan Lyons*

**NEW WELCOME  
CENTER OPENS FOR  
HAZARD-PERRY CO.  
TOURISM pg. 21**

**MT. PARKWAY FOUR  
LANE EXTENSION  
IS PROGRESSING pg. 22**

**WORLD CLASS BIKERS  
ARE COMING pg 3**

**NEW TRAILS ENJOYED  
IN PIKE COUNTY pg. 24**

Here in Eastern Kentucky, we are as friendly and hospitable as any region!

We have diverse cities and counties within our borders, and yet the similarities are unmistakable.

All through the Eastern Kentucky area we serve you'll enjoy a tourist-friendly atmosphere everywhere you go. New trails are being built and knit together to satisfy hikers, ATV riders, and more.

Scenic beauty here is unrivaled. There are several mountaintop overlooks with unique panoramic sights you'll always remember.

The Country Music Highway portion of our East Kentucky stopover boasts of great talent, past and present.

From Chris Stapleton, Tyler Childers, Sturgill Simpson in recent times, all the way back to Superstars like Tom T. Hall, Loretta Lynn, Dwight Yoakam, Patty Loveless, Ricky Skaggs, The Judds, Billy Ray Cyrus, Keith Whitley and similar others, this part of Kentucky is especially ripe with musical talent, singers, and songwriters.

So we welcome you to a grand experience!



## A Panorama Now Awaits Travelers On East US 460



*There's a great new bridge in east Pike County-its something to see! More on our roads on Pg. 22*

**Letcher County**  
**TOURISM**  
*Off the beaten path*

DISCOVERLETCHER.COM

**PINE MOUNTAIN TRAIL • LILLEY CORNETT WOODS •  
TANGLEWOOD TRAIL • FISHPOND LAKE • BAD BRANCH  
FALLS • PINE MOUNTAIN OVERLOOKS • LITTLE SHEPHERD  
TRAIL • RAVEN ROCK GOLF COURSE • KY MIST MOONSHINE**



***Proudly feeding you  
for over 50 years.  
Stop in a double kwik near you!***



# WILD HORSES AND THEIR CHALLENGES WILL SOON GET MUCH NEEDED HELP

The Perry County Fiscal Court is joining with the Appalachian Horse Project from Knott County, to provide a stable space for free roaming horses.

A Perry County farm, Miniard Farms will make available approximately 80 acres to sustain the free roaming horses connected with the non-profit Appalachian Horse Project.

The safe haven plan for assist these wild horses will open this Spring.

Various counties in Eastern Kentucky have wrestled with the issue of wild, free roaming horses.

Bernice Amburgey, a spokesperson for the Appalachian Horse Project stated that horses are a part of our region's heritage.

“They need attention because of weight issues, injuries, health issues, or they are getting out on the public roads.”

Scott Alexandeer, Perry County Judge-executive, feels the horse center will add to the tourist attractions.

“Now with the horse center, after a couple of days at the nearby Off Road Park, visitors can also come and see the horses and the programs that are going on.

Plans are also underway to convert a house on the property into an Air BNB site. It will provide a great place for tourists to stay right on the horse center's property.

(606) 886-1006  
stonecrestgolfcourse.com

for every season, for every reason, these destinations invite you for a stopover!

# Our Tourism **Hot Spots!**

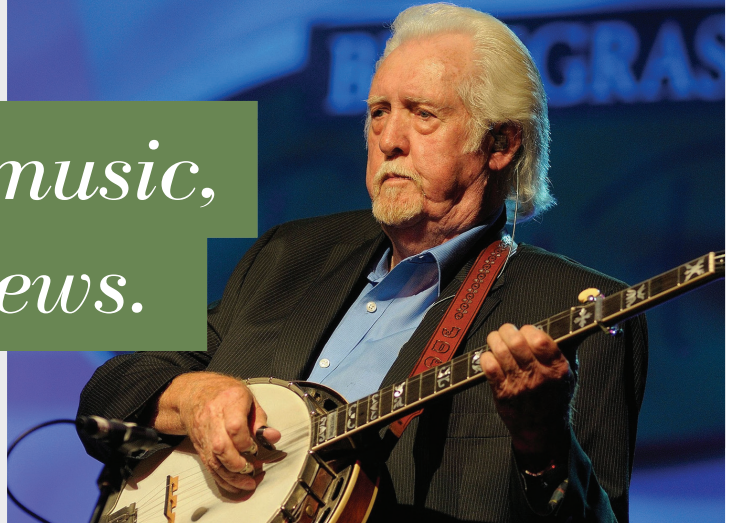
Paintsville pg 8,9,10 Floyd Co pg 14,15 Maysville pg 24 Greenp Co pg 11 Carter Co pg 29  
Grayson back cover Harlan pg 23 Stonecrest Golf pg 5 Williamsburg pg 25 London pg 28  
Knott Co pg 18 Pikeville pg 30 Hazard pg 21 Letcher Co pg 3 Red River Gorge pgs 16, 17  
Wolfe Co pg 12 Powell Co pg 7 Lee Co pg 13 Double Kwik Stores pg 4 Ky State Parks 26,27



TEAM KENTUCKY.

MEADOWGREEN APPALACHIAN MUSIC PARK

*Come for the music,  
stay for the views.*



RED RIVER GORGE



RED RIVER GORGE VISITOR CENTER AT SLADE



TOAD'S BARN AND GRILL



RED RIVER GORGEOUS CABIN RENTALS



**RED RIVER GORGE**

*plan your adventure today!*



GOPOCO.ORG



# Paintsville Kentucky

A wedding destination in the mountains

Contact us to book your special day!  
1-800-542-5790 or [visitpaintsville@gmail.com](mailto:visitpaintsville@gmail.com)



## US 23 Country Music Highway Museum

Surround yourself with elegance at the Country Music Highway Museum. The Museum offers different decoration options to suit your special event.



## The Stafford House

The Stafford House is an 1840's Victorian era house and is perfect setting for a charming wedding or wedding shower. It also serves as a classic or vintage backdrop for stunning photos.



## Mountain Homeplace

This scenic location nestled in the hills of Eastern Kentucky offers several different outdoor and indoor locations. All four seasons offer a picturesque grounds, with an 1850's church, school house, and barn. Also on site is a reception hall, patio, and amphitheater.



## The Sipp Theater

If you are wanting a unique wedding venue that will allow your artistic side to show, then the SIPP is for you. The newly renovated theater has room for 300 guests with a stage as your backdrop and our beautiful downtown streets for photos.



TEAM KENTUCKY



[FACEBOOK.COM/PAINTSVILLEADVENTURES](https://www.facebook.com/paintsvilleadventures)

**1-800-542-5792**

# Discover GREENUP COUNTY

Your gateway to adventure!

Tucked away in the stunning landscapes of Kentucky, Greenup County showcases the state's natural beauty. With its rolling hills and winding rivers, this region enchants visitors with its peaceful charm and plentiful outdoor activities.



[www.discovergreenup.com](http://www.discovergreenup.com)

TEAM  
KENTUCKY

Welcome To

Naturally Gorgeous

# Wolfe County



Swift Silver Mine  
Festival  
Labor Day Weekend



Rocktober Festival  
October



Rodeo  
August



Car Shows



Underground  
Kayaking



Mountain  
Climbing

## EXPLORE THE UNKNOWN

Discover breathtaking landscapes, rich culture, and welcoming communities. Whether you're exploring the scenic trails or engaging with friendly locals, Wolfe County offers an unforgettable experience for every traveler. Come and create lasting memories in this hidden gem!

TEAM  
KENTUCKY

[visitwolfecounty.com](http://visitwolfecounty.com)



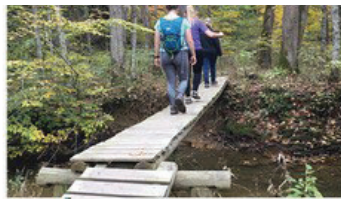
# Play Your Way

in Lee County,  
Kentucky



Rivers, Rides,  
Hikes, Bikes,  
Drives & Climbs

(... & they're just the start)



## Events

### Cruse-Ins on Main Street

First Saturdays of the Month

April - Sept

[Facebook/beattyvillemainstreet](https://www.facebook.com/beattyvillemainstreet)

### Beattyville Appalachian Memories Festival

Third Weekend in May

[www.appalachainmemoriesfest.com](http://www.appalachainmemoriesfest.com)

### Woolly Worm Festival

Weekend after the third

Monday in October

[www.woollywormfest.com](http://www.woollywormfest.com)



Subscribe to our newsletter

[www.visitleecountyky.com](http://www.visitleecountyky.com)

**VISIT BEATTYVILLE, KY**

# FLOYD

COUNTY, KY

## TOURISM

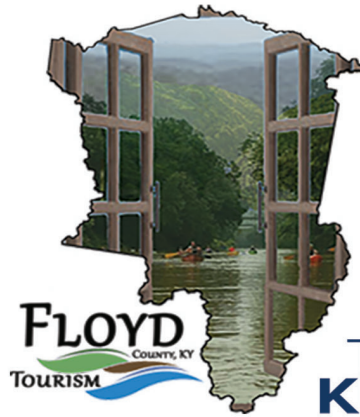


Golfing, hiking, biking, kayaking, canoeing, fishing, listening to local music, soaking up local history and culture, or just relaxing - you can also check out our many wonderful restaurants and unique shopping!



The Banner/Allen Boat Ramp is our newest river access! Enjoy our many other adventure trails!

[www.floydcountytourism.com](http://www.floydcountytourism.com)



**TEAM KENTUCKY.**

Alpique Inn 606 874-2475

Comfort Suites 606 886-2555

Eastern Heights 606 478-5156

Eastern Ky Trails Campground 606 949-1380

German Bridge Campground 606 874-1180

Jenny Wiley State Resort Park 606 889-1790

Jenny Wiley Campground 606 889-1790

Quality Inn 606 889-0331

Super 8 606 886-3355

**Great Food, Comfy Hotels, and  
Good Ole' Southern Hospitality  
Await YOU in Floyd County!**

# Red River Gorge

## VACATIONS



Great Gorge Getaways await! Plan your vacation with the friendliest folks who'll support you from planning to check-out. We've got something to suit every taste and budget.

[RedRiverGorgeVacations.com](http://RedRiverGorgeVacations.com)



### Lodging

Accommodations for every budget conveniently located in the heart of Kentucky's top getaway destination.



### Activities

Soaring adventure, jaw-dropping beauty, and unexpected finds in the heart of Red River Gorge.



### Shopping

From supplies, apparel, treats, and gifts, you'll never need to worry about leaving anything at home or finding that special something.



### Dining

Snacks, ice cream treats, or hearty after-hike meals, we've got something for every appetite!

### Host your Event in the Red River Gorge

The Red River Gorge is an idyllic spot for weddings, corporate retreats, and all kinds of group getaways.



Weddings



Corporate Events



Reunions, Retreats & More



Cabins For Every Budget & Group Size  
[RedRiverGorgeCabinRentals.com](http://RedRiverGorgeCabinRentals.com)



The Perfect Destination For Groups & Weddings  
[CliffviewResort.com](http://CliffviewResort.com)



Relax in Clean & Cozy Comfort  
[RedRiverGorgeInn.com](http://RedRiverGorgeInn.com)



Modern Styling & Exceptional Comfort  
[3RiversInn.com](http://3RiversInn.com)



Comfortable Camping With Stunning Views  
[NaturalBridge.camp](http://NaturalBridge.camp)



All American Favorites  
[HungryHiker.org](http://HungryHiker.org)



Soar Over The Gorge On 5 Thrilling Ziplines  
[RedRiverGorgeZipline.com](http://RedRiverGorgeZipline.com)



Kayak, Canoe, SUP Tours Through The Gorge Grotto  
[GorgeUnderground.com](http://GorgeUnderground.com)



Challenge Yourself With Our Mini Golf Course  
[ThrillvilleAdventureGolf.com](http://ThrillvilleAdventureGolf.com)



Guided UTV Rentals & Off-Road Jeep Tours  
[RedRiverGorgeOffRoading.com](http://RedRiverGorgeOffRoading.com)



Canoe & Kayak Rentals  
[KayaktheRed.com](http://KayaktheRed.com)



Local Artists, Crystals & Uncommon Gifts  
[EarthShopAtRedRiverGorge.com](http://EarthShopAtRedRiverGorge.com)



Enjoy Sweets & Supplies While In The Gorge  
[RedRiverGorgeGeneralStore.com](http://RedRiverGorgeGeneralStore.com)



Gifts & Supplies For The Perfect Gorge Visit  
[GiftShopAtRedRiverGorge.com](http://GiftShopAtRedRiverGorge.com)



Authentic Mexican Cuisine  
[LaCabanaOfSlade.com](http://LaCabanaOfSlade.com)



# Knott County Tourism & Knott County Fiscal Court



**CARL CRAFT**  
Magistrate District 1



**RICKY THOMAS**  
Magistrate District 2



**JEFF DOBSON**  
Judge-Executive



**BRENT SMITH**  
Magistrate District 3



**CALVIN WADDLES**  
Magistrate District 4

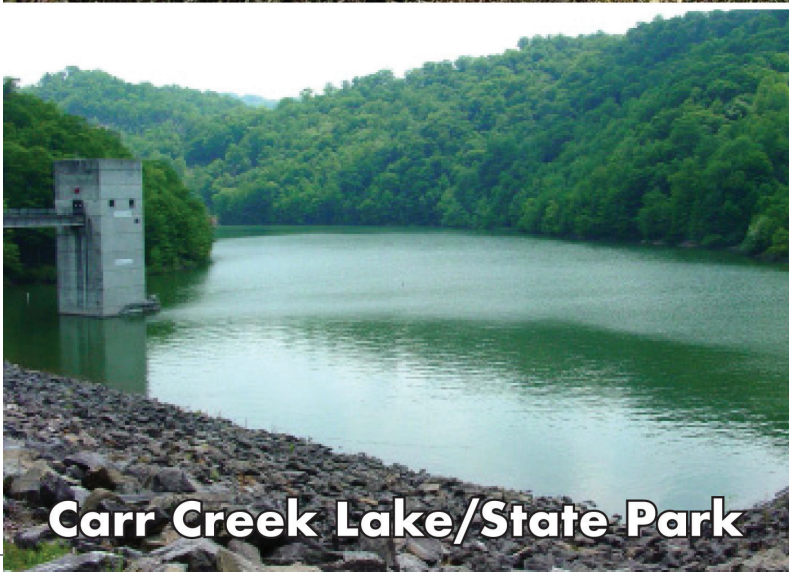
## Invite you to Adventure in Knott County



**Horse Trail Ride**  
**1st weekend of**  
**May & October**



# MINE MADE ADVENTURE PARK & CAMPGROUND



**Carr Creek Lake/State Park**



[www.knottcountyky.gov](http://www.knottcountyky.gov)



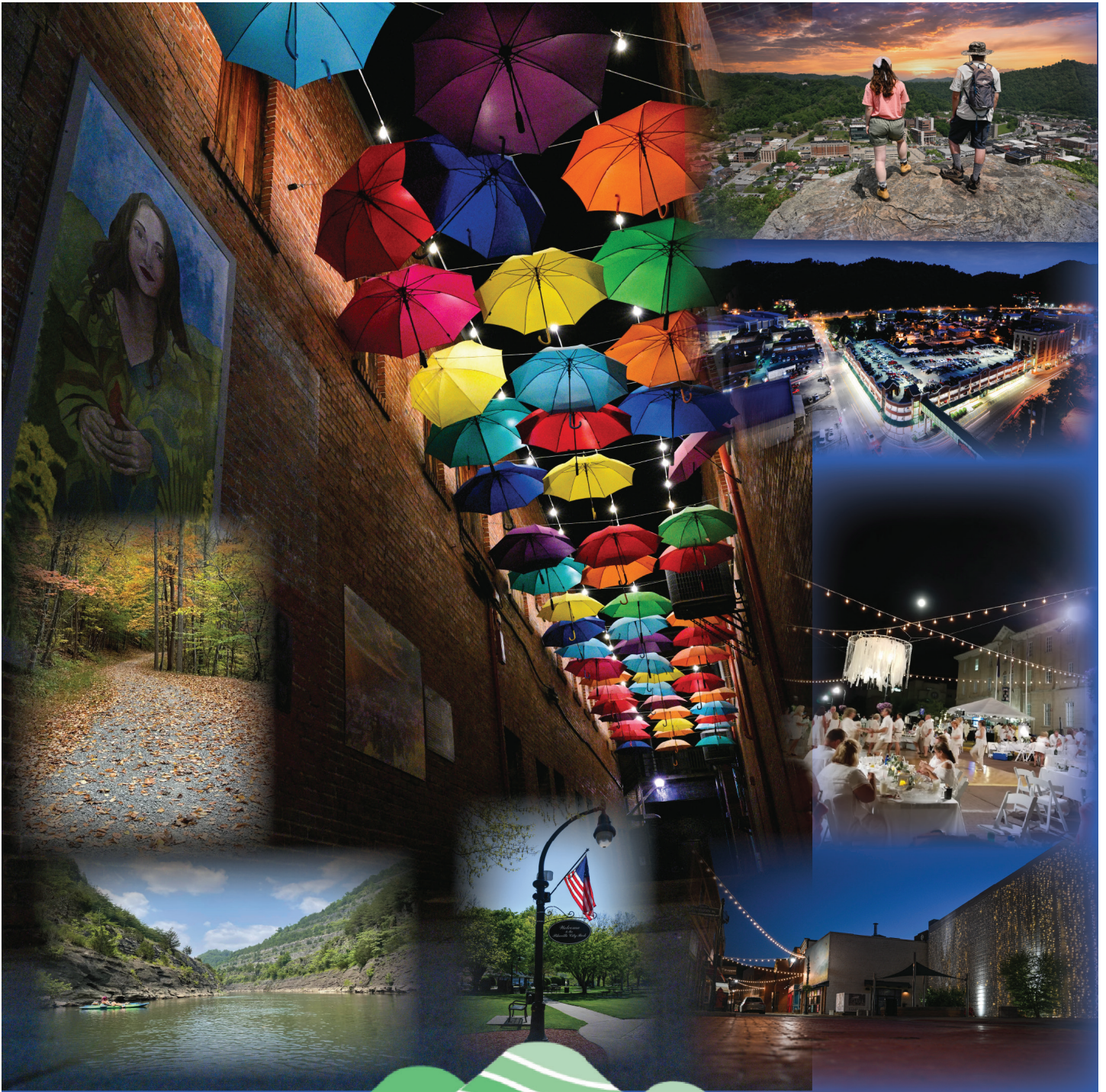
# EXPLORE MAYSVILLE'S LEGENDARY CHARACTER

Nestled along the scenic Ohio River, **Maysville, Kentucky** is one of **Country Living's 2025 Best Small Towns in America**. Rich in history—from bourbon's earliest beginnings at **Old Pogue Distillery** to connections with Daniel Boone and **Simon Kenton**—this charming town boasts stunning historic architecture, vibrant arts, and the world's largest private miniature collection. Whether catching a show at the historic **Washington Opera House**, dining riverside, or exploring outdoor adventures, Maysville offers the perfect weekend escape filled with genuine Southern hospitality.

**MAYSVILLE**  
Explore Legendary Character

Start your legendary journey  
at **VisitMaysville.com**

TEAM  
KENTUCKY



# Pikeville, Ky

[WWW.VISITPIKEVILLE.COM](http://WWW.VISITPIKEVILLE.COM)





Hazard Downtown view seen at left, and the new Hazard/Perry Co. Tourism Welcome Center at right  
So Much To See and Do....And Everyone Is Invited

Tucked away in the Appalachian Mountains, the small town of Hazard is perched on the banks of the North Fork of the Kentucky River. Our folks are friendly, helpful, talented, and can be known to spin a tale or two—maybe even a ghost story. Ooooooohhh! Come visit us! You may just make a few friends while you are here!

The mountains are always changing. Spring flaunts colors with the green buds and white flowers of the dogwoods and wild cherry trees. Summer's lush green leaves create a vibrant landscape. Fall is a feast for leaf-peepers driving along the twisty roads, ooohing and ahhing at the painted scenery. Winter produces its own scenic views of rock outcrops or snow-draped branches.

The Hazard Perry County Tourism Commission has a new location in downtown Hazard, 1133 North Main Street, right across from the "Welcome to Hazard" landmark. Stop by to see us when you are in our "neck of the woods!"

With downtown revitalization, locals have "taken up" residency along Main Street: The Art Station has become a vital part of the music and arts culture. Appalachian Apparel sells quality hand printed shirts, hats, and gear. The Hazard Coffee Shop, right in the middle of downtown, is a popular gathering place. Are sweets more your indulgence? Pantry Shelf doughnuts, or Rudy's Bakery's chocolate-dipped candy have you covered. Shennagians serves lunch salads, sandwiches, and more.

The Grand on Main, a multipurpose area with a stage for musical events, hosts mini festivals, and bi-weekly summer events on Thursday evenings. The Farmer's Market Pavillion, at the end of Main Street, is home to Wednesday evening and Saturday morning markets, June through October. Belcher & Bourdeaux, a gift shop on High Street, sells unique items for your selection. Taulbee Music, also on High Street, is a must stop for area musicians. On East Main Street, you can shop for ladies and gents' clothing and formal wear (606 Hot Mess Express, Taylan's, Coal Country Candles, Jewels by Julia Formals, Ketaco Suit). If you're a treasure hunter, give Jac-Lin's consignment shop a search.

North Main has a fun surprise—Hazard's most famous landmark, the Mother Goose House! Built in 1940 by George Stacy, it has stood the test of time. Mr. Stacy wanted a house like no other! Designed from the bone structure of a goose, the back and neck form the roof of the grand ole lady. The

house and windows are oval shaped. Be sure to get a selfie with her while in town. Appalachian Quilt and Craft shop is just a stone's throw one-half mile down this highway. Quilting fabrics, patterns, supplies, and friendly advice await your visit.

The Highway 80 corridor provides more retail shopping and restaurants.

The Perry County Park includes a walking track and stage, basketball - tennis - pickleball courts, remote control race car track, skateboard park, dog park, picnic shelters, stationary exercise stations, putt putt golf, children's playground, boat ramp, and kayak pick up station. The North Fork of the Kentucky River is perfect for kayaking, fishing, and canoeing.

The Senior Citizens Center is the centerpiece of the Perry County Park. This beautiful, rustic log building hosts community events frequently. It is also available to rent for private events to help serve the community.

Community parks at Lothair, Hardburley, Viper, and Leatherwood are well maintained for the citizens and visitors to enjoy. The Jim Rose Basketball Court (Main Street) and City Basketball Court (City Water Plant) stay busy with pick-up games.

The Hazard Pavilion is well equipped for fitness routines with an indoor elevated walking track, tennis & racquetball courts, an Olympic-sized pool, and weightlifting equipment.

Ben Braman Trails at Perry County Park deliver experiences for the novice and advanced hiker. Guided hikes for families or beginners are a popular event. The Moon Hikes allow hikers to see the trails as not many others do, in all their nighttime glory. Be sure to take your headlamp or flashlight! Leatherwood Off Road Park, the largest in Kentucky, is the ultimate off-road experience with 50,000 acres of woodland! From the "newbie" to the experienced, there is a place for you. Scheduled events begin with the March Spring Kick Off all the way through the December Christmas Light Ride. New this year is a national event, the ULTRA4 NATIONALS will be held October 14-15-16-17-18.

What's to eat in Hazard/Perry County? We have a wide variety of locally owned restaurants, franchises, and delis available to satisfy your palate. Check out our website <https://www.hazardperrytourism.com/> for more details.

At Buckhorn Lake State Resort Park, the outdoors awaits your visit with opportunities for swimming, boating,

READ MORE ON PAGE 30



**The historic McConnell House is located next to US 23 at the end of the Industrial Parkway in Greenup County.**

## Transportation Improvements Are Underway

A new road project in the Big Sandy Region will complete the Mountain Parkway link to near Winchester eastward to Prestonsburg. The construction of the last 14 miles is barely underway, but when complete, the four-lane highway will provide vastly improved travel convenience between the Clark County and Floyd County starting points.

The Project Manager for the Kentucky Transportation Department Aric Skaggs observed that early preparations that are ongoing are not especially visible right now.

The route of the new road crossing the east side of Salyersviulle and Magoffin County is being largely rerouted away from the existing path of Ky. 114.

Special drainage installations are underway, along with major excavations along the mountains and valleys along the way.

Skaggs also said a specially designed concrete pipe has been installed in the Short Fork area.

### ***This Bridge Is The Highest***

A new sign is going up along US 460 in eastern Pike County. It marks the location of the Harrell

Caudill Memorial Bridge. This is Kentucky's tallest bridge at an overall height of 334 feet above the surrounding terrain.

Kentucky Transportation officials are inviting everyone to take a super scenic drive across this concrete wonder as we all celebrate the arrival of nice weather during springtime.

The exceptional new bridge is another example of the continuing efforts from state transportation to better connect the communities of Eastern Kentucky.

### **New Construction Has Begun on the Mt. Parkway**

Another Big Sandy road improvement project has been discussed extensively in early April as the Kentucky Transportation Cabinet hosted two public hearings about the way to proceed with a list of improvements of the 18-mile length of road between Paintsville and Salyersville. This stretch of highway, mostly two lane with

passing lanes on the hills, has racked up a higher incidence of accidents than the statewide average.

more on page 24



Black Mountain Thunder Zipline!  
So fun!



Black Mountain Offroad Park!



Mountain Memories!



Wish you were here!

**W**ELCOME TO HARLAN COUNTY! WHERE THE ADVENTURE BEGINS! IN HARLAN COUNTY YOU CAN LITERALLY SEE KENTUCKY FROM TOP TO BOTTOM. VISIT THE HIGHEST PEAK IN KY AT BLACK MOUNTAIN OR GO UNDERGROUND ON AN ANIMATRONIC MINE TOUR AT PORTAL 31. VISIT KENTUCKY'S HIGHEST, FASTEST, AND LONGEST ZIP LINE AT BLACK MOUNTAIN THUNDER OR GO OFFROAD AND CLIMB MOUNTAINS AT BLACK MOUNTAIN OFFROAD ADVENTURE PARK. WHILE YOU'RE HERE BE SURE TO VISIT OUR NEWEST DOWNTOWN ATTRACTION IN HARLAN COUNTY P: 606.573.4495 E: HARLANTOURISM@GMAIL.COM AT THE HARLAN COUNTY BEER COMPANY. WHETHER YOUR ADVENTURE INVOLVES THRILLSEEKING OR JUST SEEKING TO RECONNECT WITH THE MOUNTAINS, HARLAN HAS MOUNTAIN MEMORIES WAITING FOR YOU.

WHERE THE ADVENTURE BEGINS



# HARLAN COUNTY KENTUCKY

[www.harlantourism.com](http://www.harlantourism.com)

P: 606.573.4495 E: HARLANTOURISM@GMAIL.COM

VISIT OUR WEBSITE OR CALL AND START PLANNING YOUR ADVENTURE IN HARLAN COUNTY TODAY!



ADMIT ONE

Portal 31 Mine Tour  
We went underground!

# POKE SALLET FESTIVAL

FESTIVAL IN DOWNTOWN HARLAN



FREE ADMISSION - FREE CONCERTS - FAMILY FUN

# JUNE 5TH-7TH

COME ON DOWN TO HARLAN, KY THE 1ST FULL WEEKEND OF JUNE. FOR THE POKE SALLET FESTIVAL! YOU'LL FIND LIVE MUSIC, CAR SHOW, FOOD, VENDORS, A PET SHOW, A 5K, MISS HARLAN COUNTY PAGEANT, A CARNIVAL, NATIONALLY TOURING ACTS, & SO MUCH MORE! VISIT [POKESALLETFESTIVAL.COM](http://POKESALLETFESTIVAL.COM) FOR MORE INFO.

# *A New Trail System Adds To The Growing Number of Attractions*

The Hillbilly Trail is found 20 miles south of Pikeville, and is conveniently located near US 23.

Speaking about the vehicles yo can see on this thoroughfare is Mike MCCoy with Team McCoy Motorsports.

“Folks are happily riding along in upper echelon side by sides worth \$20,000 to \$40,000” he explained.

These ATVs often are equipped with extra

See fresh updates  
at [www.countrymusichighway.com](http://www.countrymusichighway.com)

features such as power windows, a flip windshield, a fully enclosed cabin, and they have heat and air conditioning.

Jerry Adkins is the director. He says people are coming from all over the United States,

## *Roads from page 22.....*

Two alternatives were explained at the meeting, one reroutes a few lanes and creates new turning lanes without widening the overall original width of the road. The second approach calls for some widening and total creation

Canada, and Mexico.

He observed that the Flatwoods Trail Head is their favorite attraction, with 100 miles of trails covering 6,000 acres.

This section of trail is entering the 3rd year, and plans to build a second trail on the opposite side of Pike County is

of new turn lanes and passing zones.

The public meetings were held during the first week of April at the Johnson Central High School in Paintsville and at the Magoffin County High School in Salyersville.

are in the plans for the near future.

Riders can enjoy overlooks, scenic mountaintop panoramas, rock formations, and thrilling trail routes.

Adkins says the presence of the trail has led to an uptick in entrepreneurial ventures by local citizens who have created 20 lodging facilities. Air BNBs have flourished along the trail in particular. One new campground has recently opened. Two more are under construction. There have been new ATV parts and repair shops opening, too.



Photo By : Timothy D. Huds

**At left you can see another treat for outdoorsmen (and ladies) in our part of the state.**

**These stately elk were found early one morning near the mountain top.**

# WILLIAMSBURG, KENTUCKY

*Gateway to the Cumberlands*

**Welcome to Kentucky Splash Waterpark & Campground**

**606-549-6065**

**[www.kentuckysplash.com](http://www.kentuckysplash.com)**

**I-75  
Exit 11**



**TEAM  
KENTUCKY**



*Come visit*  
**KENTUCKY**   
**STATE PARKS**

*...and fall in love with our New Kentucky Home!*

From hiking and birding to cozy cottages, events, museums, and more, our 44 Kentucky State Parks offer a great getaway for everyone to enjoy.

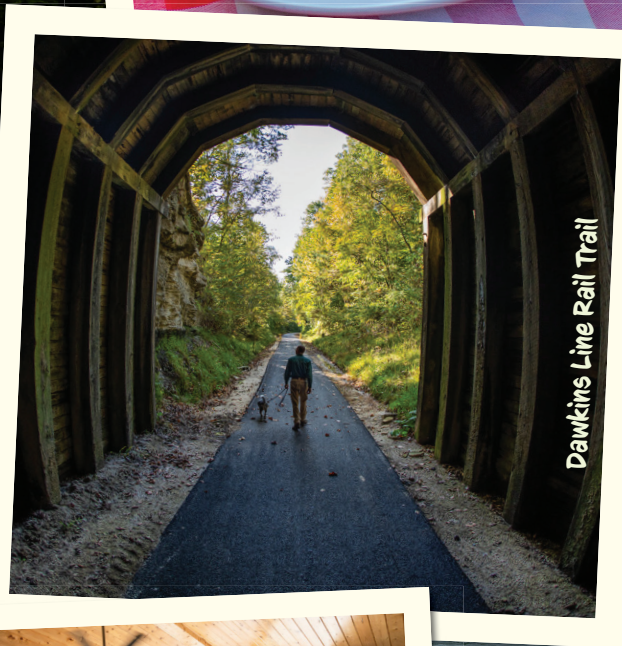
Visit [parks.ky.gov](http://parks.ky.gov) to plan your next adventure.



KENTUCKY STATE PARKS  
 "the nation's finest"

TEAM   
**KENTUCKY**

*New*  
**Kentucky**  
 Home





**May**

- 2** Appalachia Herb & Handcraft Heritage Festival
- 21 - 24** Grayson Memory Days
- 22 - 23** 1st2FLY STEAM FESTIVAL (Olive Hill)

**June**

- 6** Aquatic Adventures Balloons on the Water
- 6** Carter Co. Shrine Club Fun Horse Show

**July**

- 4** Olive Hill Homecoming Parade & Fireworks
- 16 - 18** Carter County Shrine Club's 35<sup>th</sup> Annual Bluegrass Festival
- 30- Aug 1** Orange Army Bluegrass Festival

**August**

- 9 - 16** Carter County Fair

**September**

- 12** Carter County Bigfoot Fest
- 19** American Legion Post #138 Cruise-In
- 26** Carter Co. Shrine Club Fun Horse Show

**October**

- 3** Olive Hill's 10<sup>th</sup> Annual "It's Fall Y'all" Vendor & Craft Festival
- 9 - 11** Vandalia Renaissance & Fantasy Faire
- 17** Grayson's Oktoberfest
- Each Fri & Sat** Aquatic Adventures Haunted Trail

**December**

- 4 - 5** Christmas on the Hill



**APRIL - OCTOBER at the Olive Hill Depot:**

**Olive Hill Cruise Night 6PM....final Fridays**

**286 Artisan Market 8 AM .....First Saturdays**

# Avid Cyclists Will Pedal Through Jenny Wiley Park

Olympic USA qualifiers will participate in races in Eastern Kentucky.

The Kentucky Road Racing series is Kentucky's USA cycling sanctioned race series. A Redbud Ride was held in London on April 18 featuring four routes of different distances.

Racers chose to compete in 24, 34, 72 and 100-mile events.

When this summer hits, cyclists will be making their way to Prestonsburg.

Nikki and Don Fields have pledged their assistance to help make sure the event is a success and goes off without a hitch.

The USA cycling event for Prestonsburg features a racing route that is a 17-mile loop. It goes through downtown Prestonsburg, and then it comes back around and passes through Jenny Wiley State Park.



Hiking bridge near Letcher County's Bad Branch



Scenic overlooks are scattered around our region.

Camping  
Hiking  
Mountain Biking  
Paddling  
Shopping  
Horseback Riding  
Cycling  
Drag Racing

Choose your own **Offroad** adventure

**LONDON**  
KENTUCKY

**TEAM KENTUCKY**

Adventure's Beginning!

FLOWCODE  
LONDON  
KENTUCKY  
PRIVACY.FLOWCODE.COM

## ***Hazard Is On The Move Visit There and Find Out***

from page 21  
skiing, beach time, fishing, tennis, hiking trails, picnicking, horseshoes, and more. Overnight guests can enjoy the Lodge, Cabins, or Buckhorn Trailhead Campground. The Lodge staff at the Bowlingtown Kitchen dining room serves a wide variety of Kentucky dishes.

Buckhorn Log Cathedral, located in the Buckhorn community, is a native white oak structure, listed on the National Register of Historic Places. Here, you will find an original Hook and Hastings Pipe Organ.

The Black Gold Festival is a three-day event held the third full weekend of September, on Thursday, Friday and Saturday. Food, craft, and commercial vendors line Main Street with a wide variety of offerings. Music is a big part of the festival with a headliner on Saturday night. All the music is free, making it a great family event. Come once and you'll want to come back!

Check our website for a detailed listing of annual events: Appala

chian Artisan Festival -  
The Art Station – Main Street-First Saturday of May On the Rail The Rail Show - Perry County Saddle Club - Perry County Park Horse Ring - May 30, 6:00 pm The Perry County Fair - June 11,12-,3 Perry County Park.

Summer in the Park – Bobby Davis Museum – June TBA 4th of July Fireworks & Fish Fry - Main Street – July TBA North Fork Music Fest – July TBA Five Alarm Festival – July TBA Miss/Mister Black Gold Festival & Miss/Mister Perry County - Hal Rogers Forum TBA Black Gold Festival – Main Street - September 17, 18,19 Black Gold Festival's Black Diamond Street Rod Show – September 19 Octoberfest Music Festival – Main Street-TBA Leatherwood Off Road Park-Ultra4 Nationals-Cornettsville-October 14, 15, 16, 17, 18 Battle of Leatherwood - Cornettsville - October 23,24,25 Pink Weekend - Nov. 20, 21 Christmas in a Small Town - December 10,11,12.

Follow us on Facebook and Instagram!



### **How much coffee is consumed daily in our world? HOW ABOUT 2 BILLION CUPS?!!**

*There are a lot of reasons to indulge in a super cup of coffee, such as strong espressos to iced coffees, regular cups of java, or join the surging popularity of iced coffee.*

*Eastern Kentucky has no shortage of gourmet coffee choices, especially with a newly formed consortium of like-minded coffee merchants.*

*These shops and their locations are listed below:, although there are considerably more throughout the region.*

*Herman's Brew-Main Street in Beattyville in Lee County*

*Gypsy Grind Coffee near the Red River Gorge in Stanton in Powell County.*

*Daniel Boone Coffee Shop located in the middle of the Red River Gorge in Powell County.*

*Hazard Coffee Co. Main St. in Hazard (Perry Co)*

*Let Freedom Ring Coffee Main St. Sandy Hook*

# We'd Like To Introduce You To The Country Music Highway Where Our Stars Keep Shining

**Chris Stapleton**-He has won 11 Grammys, honored with 19 CMA awards, and 21 ACM trophies.

**Tyler Childers** has been known for biting country, bluegrass and folk, and earned his first Grammy.

Great performers like Loretta Lynn, Dwight Yoakam, Tom T. Hall, Keith Whitley, Ricky Skaggs, Patty Loveless, Billy Ray Cyrus, Gary Stewart, Hylo Brown, and songwriters like Josh Osborne from Pike Co. and Lawrence County's Larry Cordle are all examples of why the Kentucky Legislature decreed the US highway 23 region should hereafter be known as the Country Music Highway.

Expect many other future stars are working right now to claim the spotlight in the near future!



*A REVERED TOURIST ATTRACTION, LORETTA'S HOMEPLACE*



# Event Schedule

## GRAYSON, KENTUCKY

2026-27



SUMMER - WINTER



**MAY**  
21-24  
PARADE  
**23**

**MEMORY DAYS**  
LIVE MUSIC | VENDORS | FOOD  
TRUCKS | ACTIVITIES & MORE  
MAIN STREET, GRAYSON KY

**HAUNTED  
HUSTLE 5K**  
GRAYSON CITY BUILDING | GRAYSON, KY

SATURDAY  
**OCT  
24**  
6 PM

SATURDAY  
**OCT  
31**

**OCTOBERFEST**  
ACTIVITIES | EVENTS | GAMES |  
VENDORS & MORE  
MAIN STREET, GRAYSON KY

**HOMETOWN HOLIDAYS  
SKATING RINK**  
CORNER OF EAST MAIN STREET &  
POMEROY ST | GRAYSON, KY

**NOV  
28**  
THROUGH  
**JAN  
4**

SATURDAY  
**DEC  
5**

**HOMETOWN HOLIDAYS  
CHRISTMAS PARADE &  
MARKET**  
MAIN STREET | GRAYSON, KY

**SCAN FOR INFO**

