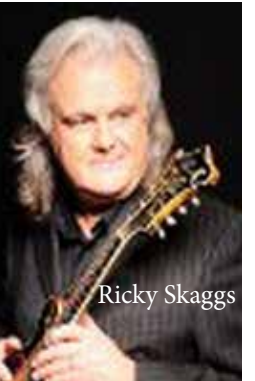


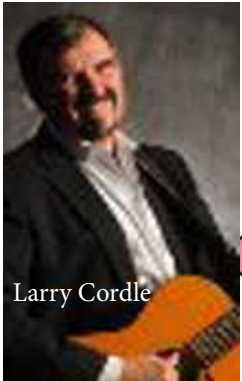
# Lawrence County, Ky. Where Fun Happens In the "Heart of the Country Music Highway"



## Yatesville Lake State Park "Bass Capital Of Eastern Ky."



Ricky Skaggs



Larry Cordle

Two legendary Bluegrass performers grew up together in Lawrence Co. together. Both have made major impacts with their performances, songwriting, and instrumental skills. In 2015 Larry Cordle was inducted into the Kentucky Music Hall Of Fame. Ricky Skaggs was honored with Lifetime Achievement Award in 2016.

*Ours Is The Land of Three Rivers  
Levisa Fork, Tug Fork, and Big Sandy all converge in Louisa. So come enjoy your kayak or canoe, and fish to your heart's content! Launch your boat beside our famous Louisa-Ft. Gay Bridge. Check out the old Number 3 Lock. The newest project is an ongoing scenic Riverwalk development.*



## Attractions Everyone Must See!

**Yatesville Lake State Park**  
Bass Capital of Eastern Kentucky  
2667 Pleasant Ridge Road  
Louisa, KY 41230 (606)673-1492

**Eagle Ridge Golf Course**  
Top 10 Kentucky Golf Course

**Lawrence County Park**  
And Campground  
Cabins, RV & Tent Sites & more

**'The Falls' Campground**  
"Mesmerizing"  
6072 US Hwy 3  
Louisa, KY 41230  
(606)826-0212

**Fred M. Vinson Museum**

**13th Chief Justice of U.S Supreme Court**  
315 E. Madison St.  
Louisa, KY 41230  
(606)638-0078

**KY Pavillion at Falls Creek Country Music Highway**  
Welcome Center  
52 Falls Creek & US 23  
Louisa, KY 41230  
(606)638-9999

**Painted Cow Art Gallery**  
103 S. Main Cross  
Louisa, KY 41230  
606-638-1313

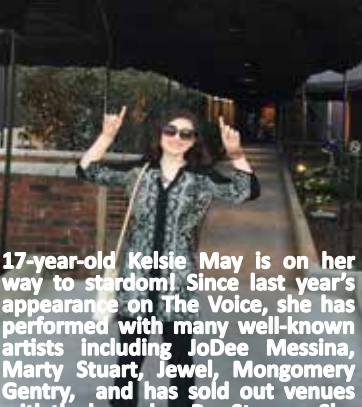
**Louisa-Ft. Gay Bridge**  
Ripley's Believe It Or Not

**Camp Caleb**  
3512 Left Fork Laurel Rd.  
Blaine Ky 41124  
(606)265-4151

**Three Rivers Boat Launch and Riverfront Mural**  
112 South Vinson Ave.  
Louisa, KY

**Outdoor Goods Annual Swap Meet Spring Event**  
606-638-9676  
brandon.meddings@lawrence.kyschools.us

**Fallsburg Fearplex**  
Weekends In October  
(606) 686-3030

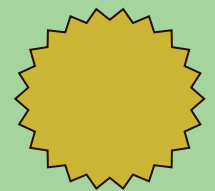


17-year-old Kelsie May is on her way to stardom! Since last year's appearance on The Voice, she has performed with many well-known artists including JoDee Messina, Marty Stuart, Jewel, Montgomery Gentry, and has sold out venues with the legendary Ray Stevens. She will be playing all over the country this summer, including Las Vegas.



## Eagle Ridge Golf Course

### Events



## Restaurants

## CAMPING & LODGING

**Annual Dog Walk in the Park**  
May 21  
Main Street Park  
Downtown Louisa  
606-483-2959

**US 23 Yard Sale**  
Last weekend in May

**Youth Fest Bluegrass Festival**  
June 18  
Lawrence County Park and Campground Amphitheater  
606-624-6976

**Farm & Field Day**  
July 8 Blaine Community Center  
(606) 673-9495

**4th of July Celebration**  
Downtown Louisa  
(606) 638-9889

**"Cruise the Plaza" Cruise-In**  
Spring-Summer-Fall  
606-859-229-9825

**Lawrence County Fair**  
Summer Event  
(606)624-7145

**Septemberfest**  
September 9, 10, and 11  
(606)471-9600

**Blaine Autumn Fest**  
October Event  
(606)939-4858

**Heritage Harvest Tour**  
September 24 & 25  
(606) 673-9495

**Appalachian Bike Tour**  
September 24  
(606)424-6816

**Dee's Drive Inn**  
(A Louisa Landmark since 1954)  
109 E. Madison St.  
Louisa, KY 41230  
(606)638-4646

**Milano Cucina (Italian)**  
102 Blair's Way  
Louisa, KY 41230

**Kentucky Fried Chicken**  
(Buffet)  
2864 KY 25-65  
Louisa, KY 41230  
(606)638-9636

**Down Home Grill**  
355 Public Way  
Louisa, KY 41230  
(606)638-0025

**Dock's Pizza**  
"Best pizza and sandwiches on the Country Music Highway!"  
8404 US 23  
Louisa, KY 41230  
(606)673-3333

**Old China Buffet**  
168 Town Hill Rd.  
Louisa, KY 41230  
(606)638-0998

**Giovanni's**  
403 N. Lock Ave  
Louisa, KY 41230  
(606)638-9053

**Clifford Country Store & Deli**  
9958 S. Hwy 3  
Louisa, KY 41230  
(606)673-4167

**Fallsburg Country Store & Restaurant**  
5913 KY Rt. 3  
Louisa, KY 41230  
(606)686-3131

**B & C Market & Deli**  
"A Blaine tradition since 1966"  
17727 Ky. 32  
Blaine, Ky. 41124  
(606)652-4352

**Super 8 Motel**  
191 Falls Creek  
Louisa, KY 41230  
(606)638-7888

**Best Western Plus**  
18199 U.S. 23  
Louisa, KY 41230  
(606)638-3420

**Yatesville Lake State Park Campground**  
2667 Pleasant Ridge Road  
Louisa, KY 41230  
(606)673-1490

**Joe's Lost Creek Cabins**  
740 US 23 Mile Marker #1

**Ulysses, KY 41264**  
(606)297-5005

**Lawrence County Park And Campground**  
Cabins, RV & Tent Sites

**Falls Campground**  
US Highway 3  
Fallsburg, KY 41230  
(606)686-3398

**Budget Inn Express Motel**  
(Under New Management)  
117 East Madison St.  
Louisa, KY  
606-638-0229



one of many historic homes

### Visit Lawrence County Park & Camground

You can pitch a tent, rent a cabin, or park your RV. Enjoy horseback, hiking and biking trails, a playground and beach area. Book your party or reunion at the conference center. A new miniature golf course will be featured this year.