

FREE!

FREE!

COUNTRY MUSIC HIGHWAY 2016 TRAVEL GUIDE



WWW.COUNTRYMUSICHIGHWAY.COM

WELCOME TO THE COUNTRY MUSIC HIGHWAY

WE'RE GLAD YOU'RE HERE!

TABLE OF CONTENTS

Loretta Lynn Releases New Album _____	Pages 3 and 4
Chris Stapleton Feature _____	Pages 3, 4, 5, 12, and 26
Elkhorn City _____	Pages 10, 11, and 12
Tim Bentley's Recent Successes _____	Pages 13 and 31
Hillbilly Drag Racing Series _____	Pages 6 and 7
Pikeville Tourism _____	Pages 8 and 9
Highlands Museum In Ashland _____	Page 14
Ashland Tourism _____	Pages 15 and 16
Lawrence County & Louisa Tourism _____	Pages 19, 20, and 21
Sundy Best Releases New Album _____	Page 22
Road To Fame Happens Again This Summer _____	Page 23
Letcher County Tourism _____	Pages 24 and 25
Van Lear Home of The Coal Miner's Daughter _____	Page 27
Paintsville Tourism _____	Page 28
5 K Canoe Race _____	Page 31
OSCAR Center Has Multiple Attractions _____	Page 29
Stars Who Made The Contry Music Highway _____	Page 30

JLC Media

609 Washington Avenue
Paintsville, Kentucky 41240
606-793-7493

cmhtravelguide@gmail.com www.facebook/CountryMusicHighway
www.countrymusichighway.com

The Coal Miner's Daughter Has Major Hit With First Album in 12 Years

Full Circle Debuts at No. 19, Reaches No. 4 by Early April

The first major superstar native to the Country Music Highway is Loretta Lynn. She is a legendary singer and songwriter. This award-winning vocalist Loretta Lynn released her first album in 12 years on Friday, March 4, 2016. Titled, "Full Circle", the 83-year-old entertainer says, "I ain't through yet", in an interview with Rolling Stone.

She also has promoted her new efforts on NBC's Tonight Show on March 3 and on the Today Show the next day.

The album was produced by John Carter Cash, famous son of Johnny and June Carter Cash and by her daughter Patsy Lynn Russell. Loretta remembers looking after John Carter when he was a small child while his Mom and Dad were on stage. "Now, he is recording an album for me."

Lynn received one of her latest honors, along with musician and record company exec Jack White as they were inducted into The Nashville Walk of Fame June 4, 2015.

Speaking in an interview with journalist Dan Rather, Loretta was asked if she will continue working or stop. "I came in this world

working, we had to if we were going to eat. When I'm at the house I'm working. I like to work."

She reminisced about writing "Coal Miner's Daughter", as a high point in her career. She also said the accompanying movie starting Sissy Spacek was a key point in her career. When first told about plans to do a movie on her life and career, Lynn asked, "Why? I haven't lived yet."

She has racked up more honors and awards than any female recording artists. She was the first woman to be named the CMA Entertainer of the Year in 1972. She has been named to the Songwriters Hall of Fame and



the Country Music Hall of Fame. Loretta Lynn owns a Lifetime Achievement Award from the Grammy Association along with four

Grammy awards. She was honored by the Kennedy Center in 2003 and earned a Presidential Medal of Freedom in 2013. In 2015, she was given the Legend Award from Billboard's Women in Music. Her career has surpassed 45 million in record sales and 51 top 10 hits.

When Lynn and White were awarded stars at the Country Music Walk of Fame last summer, mayor Karl Dean said, "They represent what is best about Nashville with music that spans multiple genres and generations."

It was 1960 when a small record company became aware of her abilities after she was playing in a Vancouver. continued to page four



GRAMMYS, A. C. M. HONORS, AND CMA RECOGNITION RESTS ON THE COUNTRY MUSIC HIGHWAY'S LATEST MEGA STAR

It has been quite a year for native son Chris Stapleton, with a number one album and plenty of critical acclaim. This young man who grew up in the Cross Creek Subdivision in Staffordsville is remembered fondly by his friends and family as a good young man. He became involved in high school football at Johnson Central and cultivated his singing and musical skills in his local church.

It was 2001 when Stapleton headed for Music City, like so many before him with big dreams of a successful career. He has been steadily rising in Nashville circles as a top songwriter, but now has accomplished the long shot goal where his name has now become a household word in America. Because of him, the Country Music Highway now proudly claims the latest in a long line of superstar vocalists and award winning songwriters.

He will have his own comprehensive display this year at the Country Music Highway Museum. A new showcase

with personal exhibits about his amazing career can be viewed by tourists and travelers to Paintsville right beside U. S. 23, The Country Music Highway.

A first-rate musician, Stapleton's songs range seamlessly from classic country, soul, and blues.

It was at the 49th Country Music Academy, or CMA Awards where Stapleton won all three categories he was nominated for. Album of the Year for "Traveller", released in May of 2015, Male Vocalist of the Year, and New Artist of the Year were all swept by Stapleton. during the nationally televised CMA Awards Show November 4, 2015 on ABC.

The CMA wins rocketed Traveller out of modest sales within a few days of Stapleton's awards sweep. The album was received well by the critics, but after news of his CMA success brought thousands of brand new fans, sales quickly carried his solo Traveller album to the top of the charts. In the

Continued To NextPage



CHRIS STAPLETON, EVERYTHING IS GOOD

Loretta's New Album Is A Smash Hit

continued from Page Three

ver, Canada club. Her first song, "Honky Tonk Girl" became a hit, boosted by Lynn and her husband Oliver Lynn driving across the country promoting the new record.

Her colorful husband went by two nicknames "Dolittle" which Loretta shortened to "Do", and "Mooney". He was a 21-year-old war veteran when they got married. Loretta was 13.

She says proudly that she wrote many of her songs toward women, and that they make up the bulk of her fans.

It is well known she

has inspired many of the female singers who have had their own huge success in country music. Examples are Reba McEntire and Miranda Lambert, and from the pop music field, Linda Ronstadt.

The Full Circle Album has impressed critics far and wide, and is the first studio effort since 2004's Van Lear Rose.

Full Circle debuted at No. 19 on the Billboard 200. It was at No. 4 the first week of April.

One music critic points out, "At 83, her voice remains miraculously well preserved."

keep up with all the news from the highway.....log on to

www.countrymusichighway.com

also www.facebook.com/CountryMusicHighway

from previous page week after Stapleton performed a medley with Pop icon Justin Timberlake, Traveller sold as many copies in mid-November as had been sold since its May release.

As he joyously accepted the CMA award for Male Vocalist, he recalled the time when he had played music in “the basement of some bar with only six people in the audience”.

Maybe an event foretelling his sudden advance in the music industry was his appearance on the cover of the American Songwriter Magazine for the September/October issue of 2015.

After the unexpected death of his father in 2013, Stapleton and wife Morgane were driving across the desert of New Mexico into the sunrise when the lyrics to Traveller began to come forth.

From the middle of 2015 forward, Stapleton was seen on The Late Show with Stephen Colbert, Late Night with Seth Myers, CBS This Morning, The Tonight Show with Jimmy Fallon, Jimmy Kim-

mel Live, and he will perform at the Atlanta Braves Concert Series after the May 29th game with the Miami Marlins.

Ken Tucker, a music critic, reviewed Traveller on NPR, National Public Radio. “His music and singing reveals a wide variety of distinctive styles. Listen to Tennessee Whiskey, written by Dean Dillon and Linda Hargrove, and you’ll hear Stapleton exercise his gift for soul music phrasing to blend R & B with country. I first heard him singing soulful bluegrass with the Steeldrivers, a song I really liked was ‘You Put The Hurt On Me’”.

He described Stapleton as having written songs for huge mainstream, highly commercial acts, like George Strait, Kenney Chesney, Darius Rucker, “Come Back Song; Josh Turner, Your Man; and Tim McGraw.

International pop music also owns one of Stapleton’s songs, “If It Hadn’t Been For Love” by Adele, co-written with Mike Henderson of the Steeldrivers.

The attention of the Country Music continued on page 12



Stapleton Comes Home With Dodge Ram Film Crew, Does Free Concerts, and Donates To His Former High School

Chris Stapleton returned home to Paintsville in fine fashion Thursday, March 24. His visit to his home town was accentuated by a film crew representing Dodge Ram Trucks. Chris Stapleton is an official spokesperson and will be seen in current Dodge Ram documentaries and commercials.

Stapleton’s visit also resulted in a donation toward a new outdoor stage on the campus of Johnson Central High School, and a \$57,000 gift to the school’s Golden Eagle Marching Band for new instruments. He also treated area fans to a free 7 p.m. concert. Earlier in the day, another free show was enjoyed by students, staff and administrators. The

free tickets were offered through online registration and were completely gone in three hours.

National media affiliates covered the homecoming, including an editor for Rolling Stone.

Students at Johnson Central consider him an excellent role model. He graduated as the valedictorian of his class and was a football player. He studied engineering in Nashville’s Vanderbilt University while deepening his involvement with the music industry.

The Golden Eagle Stage was built behind the school with help from carpentry students and volunteers from the Dodge Ram owners club, known as the Ram Nation.



RACING FANS LOOK FORWARD TO THE HIGHLY ANTICIPATED HILBILLY DRAG RACING CHAMPIONSHIP

Street drag racing is making a huge comeback (due to all the TV Shows; IE. Past Times, Street Outlaws, Pinks, Etc.,) and our goal is to capitalize on the drag racing scene and create an exciting event & attraction for the local drag racers & spectators. This will also help boost the local economies in each region by bring in much needed tourism dollars to the local economy.

Prestonsburg Motorsports and Pikeville City Tourism offices came together and reached out to Danny Boyd in Morehead KY & Tim Baldrige, The

owner of I 64 Drag Strip, and joined forces to create "The East Kentucky Hillbilly Drag Racing Series" for 2016, an event that would benefit all of Eastern Kentucky. This race Series is unique because nothing of this magnitude has never been tried before. Comprised by four cities in three different counties from the region with very different track styles. Pikeville's Street light (in a parking lot), Comb's Airport Arm Drop Drags, and I 64 Motorplex full drag track, which should make this event very exciting not only to participate,

but also as a spectator.

The East Kentucky Hillbilly Drag Race 2016 Series will be a points series race, and at the final racing show at the close of the seven-race series, there will be a total purse of \$25,000 dollars to give out between five classes.

The entire 2016 Hillbilly Drag Racing prize monies that will be up for grabs between all three tracks will be in excess of \$65,000 dollars.

Here is a rundown of the year's full schedule: Combs Airport Arm-drop Drags on April 30 Muscle On Main in

Pikeville on May 14 I-64 Motorplex near Owingsville in Bath Co. on June 4 Combs Airport Arm-drop Drags on July 2 Muscle On Main in downtown Pikeville on August 13 I-64 Motorplex September 17

Championship Race Combs Airport Arm-drop Drags October 15, 2016 Drag racing is finding new fans and multi-city cooperation in 2016 with the announcement last fall of the East Kentucky Hillbilly Drag Race Championship Series. The championship continued on next page

2016 Hillbilly Drag Race Championship Series is Outlined

continued from previous page

Drag racing is finding new fans and multi-city cooperation in 2016 with the announcement last fall of the East Kentucky Hillbilly Drag Race Championship Series. The championship race this year will feature a 25,000 payout.

The season this year represents a partnership between Pikeville, Morehead, and Prestonsburg that promoters feel can bring an upsurge in revenue for tourism venues, particularly restaurants and hotels in the three locations.

Racing will move between the three cities, with the championship

race also rotating between Pikeville, Prestonsburg, and Morehead. The 2016 Championship Series will be the seventh race of the year and will occur at the Combs Airport between Paintsville and Prestonsburg on Ky. 321.

The regular season will feature two events at Combs Airport, two rounds in downtown Pikeville, and two races at the I-64 Motorplex just west of Morehead at Owingsville. Races will span a monthly schedule until it's time for the Championship match-up at the Combs Airport.

The formal announcement of the ambitious plans for the racing series occurred September 15 in Prestonsburg with mayors Bob Porter of Paintsville, Jimmy Carter of Pikeville,

Les Stapleton from Prestonsburg, and Morehead's Jim Tom Trent on hand, and then October 29, 2015 at city hall in Morehead.

Major organizers of the 2016 East Kentucky Hillbilly Drag Race Championship Series are Tim Baldrige, I-64 Motorplex owner, James Williamson of Prestonsburg Motorsports, and Danny Boyd, with the I-64 Motorplex. The series was also well supported by the Tourism Commissions in Morehead, Pikeville, and Prestonsburg.

The racing schedule will consist of three slightly different forms of drag racing. Armdrop style at Prestonsburg, Street Light style at Pikeville, and Bracket style at I-64 Motorplex just outside of Morehead. The series will be based on a

point system. Supporters all agree with the present slogan connected with the new venture, and that is, "There isn't another racing event like this one, period!"

Three popular independent drag race venues are now joined in a collaborative 3-year plan. Combs Airport and the 1/8 mile track will host the championship this year, followed by the 300 ft. Pikeville track in the Riverfill area downtown, and in 2018 at the 1/8 mile I-64 Motorplex facility.

We're All
About Tourism
At
CountryMusic
Highway.com

Blazing Fast
4G Service
on a Nationwide
Network

Appalachian
WIRELESS

Better Service. Bigger Savings.

appalachianwireless.com   **1-800-438-2355**

Twitter is a trademark of Twitter, Inc., and is used under license. Facebook® is a registered trademark of Facebook, Inc.

Pikeville · Pike County, KY

HATFIELDS & MCCOYS

Historic Feud Tours

Convenient Lodging



Hatfield & McCoy
Inn at the Riverside



(800) 844-7453 • TourPikeCounty.com/US23



Paid in part by the Kentucky Department of Travel and Tourism

5 Reasons To Plan Your Weekend Getaway in Pikeville/Pike County, KY

Enjoy an outdoor excursion through the land where the Hatfields & McCoys called home, Pikeville/Pike County, Kentucky. Visitors from all around the world have explored the historic sites where the infamous feud took place, but it is Pike County's natural beauty, exquisite dining and live entertainment options that have transformed the passing visit into a weekend getaway. Below are 5 reasons you should plan your weekend getaway with us.

5) Outdoor Adventure with Zip, Saddle & Paddle

Zip-line atop the 8th wonder of the world, the Pikeville Cut-Through, ride horses through a scenic mountain trail, and kayak down Pikeville's serene lazy river. Pike County, Kentucky offers a wide range of outdoor activities, all within close proximity to our top-notch hotel accommodations.

4) 2 Award Winning Theatres

Experience a great show at one of our two award-winning theatres, Jenny Wiley Theatre of Pikeville and Artists Collaborative Theatre in Elkhorn City. There are a variety of excellent shows lined up for 2016, from the highly anticipated *Ring of Fire*, featuring the life and music of Johnny Cash, to the classic *My Fair Lady*.

3) Car Shows & Dragracing at Muscle on Main

Pikeville's Muscle on Main has exploded in popularity over the past several years, as gear heads from all over the country file into our beautiful city to test, tune and tinker with classics, hotrods and more. The whole event culminates with exciting drag racing in the Pikeville City Riverfill, Saturday evening. This exhilarating event is held on the second weekend of every month, May through October, and is the perfect time to visit our wonderful region.

2) Incredible Music at Main Street Live!

On the first and third Friday of every month, May through October, visitors can experience our region's unique blend of musical talent on the Main Street Expo Stage in Pikeville. Each Main Street Live! event differs in musical flavor and comes complete with food, friends and fun.

1) Comfortable Lodging at a Comfortable Price

Pike County's lodging options covers a wide variety of high quality establishments. From your favorite hotel chains such as Hilton Garden Inn, Hampton Inn and Holiday Inn Express, to our unique locally owned inns such as The Landmark Inn and the Hatfield & McCoy Lodge at the Riverside, you can always expect a friendly smile and a clean and relaxing rooms at any rate.

For Inquiries & to Request a Pike County KY Brochure:

Call: (800) 844-7453 or (606) 432-5063

www.TourPikeCounty.com

email: director@tourpikecounty.com

Where Beauty Abides
PIKEVILLE
PIKE COUNTY, KY
& Hospitality Flows!

Kentucky

HOME of THE
HATFIELDS
& THE **McCOYS**

www.TourPikeCounty.com

Pikeville-Pike County, KY Visitors Guide

Elkhorn City, Eastern Pike County:

THERE'S A LOT GOING ON HERE

Surrounded by endearing natural scenery, the centerpiece of Pike County's eastern border with Virginia is Elkhorn City.

This town makes use of its natural advantages, and boasts one of the most comprehensive calendar of events in eastern Kentucky. There are also numerous community leaders who are focused on building awareness of those established attractions and creating new ones. Their primary annual events include:

Apple Blossom Festival May 19-21

The biggest Spring event in town. Families can enjoy a carnival, a magician, food vendors, chain saw carving by Tim Crager, and a free live concert by Dave Adkins, a native of Elkhorn City. Adkins had the Billboard Number One Bluegrass album in March. He has enjoyed success in country music.

Cloudsplitter 100 October 1-2, 2016

Kentucky's only 100 mile trail race will take place on Pine Mountain during October's first weekend, Saturday, October 1 and Sunday, October 2.

This course will have 100k, 50k, and 25k distances that traverse across Pine Mountain Scenic Trail between Elkhorn City in Pike County and just north of Whitesburg in Letcher County.

This section of mountaintop landscape in eastern Kentucky is home to the greatest diversity of plant life in Kentucky.

The trail starts at Breaks Interstate Park and rambles along the ridgetop southward to Mayking, just outside of Whitesburg. The route presents all participants with scenic vistas along the border with Virginia and Tennessee. The dense forests, pioneer homesteads, caves, rock shelters, cliffs, waterfalls, rhododendron thickets, hefty sandstone boulders and upland bogs await those who pass this way. The Pine Mountain ridge area is a major eco-



The Painted Elk Project has located three painted elk around downtown, and six more will be on display by summer of 2016.

logical treasure, remaining relatively untouched. Only six roads intersect along a 110 mile area, with only one actually crossing the Cloudsplitter 100 trail.

The Cloudsplitter

100 website accurately points out, "This is one of the most difficult organized running events in the United States, and entry in this race should not be taken lightly. Due



RAILROAD ENTHUSIASTS will love the Elkhorn City Railroad Museum. The chairs pictured above were from a passenger car used by Union Civil War General and later Pres. James A. Garfield.



The famous Santa Train always runs through Elkhorn City at Christmastime. Patty Loveless has ridden this train previously.

ELKHORN DRUG

105 EAST ELKHORN STREET
ELKHORN CITY, KY. 41522
(606)754-0221
Pharmacist : Rob Lester Pharm. D.

Elkhorn City Has Plenty To Offer Every Tourist

from previous page

to the remoteness and inaccessibility of portions of the trail, the Cloudsplitter 100 differs substantially from other organized runs, so adequate mental and physical preparation are of utmost importance to each runner, regardless of which distance level they choose to enter. The short but steep mountain passes and rugged terrain are relentless in their challenge and are unforgiving to those not sufficiently prepared.”

Last year’s Clousplitter 100, welcomed competitors from Canada, France, Germany, Israel, and other foreign countries.

Ky. Trail Town

On September 11, 2015 a visit by former Kentucky First Lady Jane Beshear formally established Elkhorn City as the state’s seventh Trail Town. Trail Towns are an important expansion into adventure tourism throughout the Commonwealth.

Congratulations to the leaders and residents of Elkhorn City for their efforts to become a Kentucky Trail Town,” Mrs. Beshear said. “Becoming a certified Trail Town literally puts Elkhorn City on the map as a must-visit destination,



The Russell Fork River falls 1600 feet per mile, making for thrilling raft, kayak, or canoe rides. October’s “Lord Of The Fork Race” draws adventure seekers from all over America.

and it is a big opportunity for the community to boost local tourism and economic development.”

Two events in October will call attention to the outdoor adventure opportunities in Elkhorn City – the Cloudsplitter 100 trail race and the Lord of the Fork paddling event on the Russell Fork. Both are part of the Kentucky Outdoor Adventure Games.

Elk Tours

Elk viewing peaks in the early spring, and again in the fall months of October and November. The beautiful, powerful, majestic animals

are most visible around dawn and again at dusk.

The Breaks Interstate Park, jointly operated between Kentucky and Virginia, has scheduled 20 Elk Tours in 2016.

The first tour happens during the second weekend in April, with four elk tours during the month. Three more follow in May. One tour is scheduled for August, followed by four in September, five in October, and three final elk tours during November.

Kentucky Whitewater

The Russell Fork River that runs from Virginia through Elkhorn City and on to

the north is a favorite for whitewater rafting. During the first four weekends in October, rafters and kayak enthusiasts from around the country will be enjoying the raging waters of the Russell Fork. This waterway is a compelling draw because amid the spectacular natural beauty all around, and the river drops 160 feet per mile. The ride also includes a 25-foot waterfall. The Lord Of The Fork Challenge is a top annual draw. It is a Class V race in the Breaks Interstate Park 1600-ft gorge on a down-continued on next page

Elkhorn City Events Abound

from previous page through the largest natural gorge east of the Mississippi River.

Bicycle Trail

The '76 Bicentennial Bicycle Route is a transcontinental bike trail that became reality during the United States Bicentennial Celebration in 1976. The trail goes from the Virginia coast to the California coast in San Francisco. On the way, it passes right through Elkhorn City. Special street signs in town point the way. This nationwide route is also known as the Trans America Trail.

Painted Elk Project

Three painted elk are posted by street corners in downtown Elkhorn City. Each painted elk statue is an eye-catching display of various colors and has specific historical information printed on them. Six more painted elk will be on display at other highly visible downtown locations by early summer.

Town Full of Attractions

Elkhorn City also has a railroad museum that is open on the weekends 10 a.m. until 5 p.m., and other times by appointment. Elkhorn City was once a key railroad hub as it was where the Clinchfield and

C & O Railroads joined.

Artists Collaborative Theater has a full program of monthly shows in April

Chris Stapleton.....

continued from page five industry continues, as Stapleton is a scheduled performer for the 2016 Academy of Country Music (ACM) awards show. The program airs at the same week our Country Music Highway Travel Guide is being printed, so we don't know how many of five new nominations Stapleton may win. The show will be on CBS at 8 p. m. EDT Sunday, April 3.

The 51st ACM Awards is devoted to honoring and showcasing the superstars and emerging talent in the industry.

Stapleton's nominations include: Male Vocalist of the Year, New Male Vocalist of the Year, Album of the Year, Song of the Year, "Nobody To Blame"; Vocal Event of the Year, "Hangover Tonight" by Gary Allan, featuring Chris Stapleton. This tune was co-written by Stapleton with Barry Bales and Ronnie Bowman.

He has written many hit songs now for prominent country artists continued on page 26



Patty Loveless came from Elkhorn City, before moving to Louisville so her coal miner Dad could secure treatment for black lung. She won a 2010 Grammy for Mountain Soul, a bluegrass album, and sang a TV duet with Miranda Lambert in 2015 at an ACM event. She's a true CMH supertar!

Enjoy our majestic, panoramic
"Grand Canyon Of The South"

Up in the mountains of Virginia and Kentucky, where uncommon history, heritage and heart extend a welcome.

Be sure to join us on June 10 & 11 for our Mountain of Music Festival!!

We present old-time traditional bluegrass programs monthly.

ENJOY CAMPING, HIKING TRAILS,
BIRDPWATCHING AND FISHING
OUTDOOR FUN & ADVENTURE
IS ALL AROUND AT THE BREAKS



Information please call 276-865-4413
or visit our website at www.breakspark.com



Tim Bentley from Stanville:

An Online Duet Got Him Moving in Fast Forward

Tim Bentley says when he was about four years old, weekends with his family involved a lot of music and singing, food, and good times. He was born in Pikeville and now lives in Stanville, one hollow away from where Dwight Yoakam spent many happy boyhood days in Floyd County.

Since 1993, Bentley has worked in the coal business running a loader filling up rock trucks. He was laid off at the end of 2015.

With the extra time he had on his hands, he began to spend time on musical projects, in-

cluding singing a duet on SMULE, as many others have. His particular choice was to sing along with Cam on her Number One hit, "Burning House".

That was in February, but it got Bentley plenty of sudden notice. He had a personal Facebook page that had to be converted to a Fan Page. He had reached 5000 followers on his regular page, and another 13,000 quickly joined his Fan Page. He has also had a Reverb Nation page, (www.reverbnation.com) and then a forward slash, and Tim Bentley.

"This video is on

You Tube and has raised a lot of eyebrows" Bentley said. "I have tracked 90,000 fans from around the world, England, Canada, Asia, Ireland, Australia and just about everywhere else. It's been a lot of fun, and more than I could have ever asked."

Recently, on a trip to Nashville, he talked with 20 record producers and has entered into a management contract with Long Island Studios in Lexington, Ky.

When he was laid off from his mining job, he credits his family with support. He has continued on page 31

PICK YOUR ADVENTURE!! 2016 TOUR SCHEDULE

Trip Dates	Destination	price per person
March 9-13	SEC in Nashville	1700.00
March 19-20	Grand Ole Opry	200.00
April 2-3	Grand Ole Opry	200.00
April 21-23	Paducah Quilt Show (2 quilts to be given away)	275.00
May 15-21	HAWAII	3200.00
ø500 Deposit DUE NOW staying in Honolulu, includes flight		
May 27-29	New York City 3-Day	300.00
staying in hotel going and coming		
June 4-13	Carnival Cruise to BELIZE	1500.00
ø500 Deposit due now (leavig from New Orleans and includes one day in New Orleans)		
June 16-20	Disney/Orlando	1000.00
(Includes 3 day passes) first two persons per family pay ø1000 each, the 3rd and 4th pay ø500 each, so a family of four would pay ø3000		
July 7-17	Southwest Extravaganza	1800.00
Grand Canyon, Vegas & much more		
July 20-24	NYC Five Day	999.00

OWNER/OPERATOR

JETT TOURS

606-272-2638

Lillian Jett Trent 3063 Highland Road Jackson, KY 41339

e-mail jetttours@aol.com

website: www.jett-tours-online.com

Highlands Museum Has A Dazzling Collection of History and Learning

Highlands Museum and Discovery Center is a crowd pleaser in the middle of downtown Ashland, located in what was once the thriving C.H. Parsons Department Store on Winchester Avenue. Visitors and tourists can explore three complete floors of varied displays with one entire level devoted to interactive children's exhibits.

The museum highlights the rich history of the Ashland area. There are military exhibits, pictures of the early development of Ashland, river history, plenty of vintage clothing, an authentic school room from the 1860-1920 era, and profiles of key citizens from the area. Ashland was an industrial center, and information on the Ashland Oil and Refining Co. reminds visitors of a crowning achievement for the Ashland area.

In addition to their permanent exhibits, the Highlands Museum also has rotating ones. Fresh attractions and different aspects of local history are always in the spotlight. The museum also has rental space available for special events including children's birthday parties and wedding receptions.

Exhibits surrounding famed Country Music

Highway superstars are in good supply. Tourists can get a close look at stage outfits and many artifacts donated by stars from Jenkins in the South to Flatwoods and Greenup County in the North.

The museum is quite large, and families can also take home keepsakes and souvenirs in the gift shop. The Highlands Museum and Discovery Center is now in their 31st year of operation.



One of the Ohio River boat's wheelhouse has been displayed inside the Highlands Museum. There is a complete section on river commerce and the part played by the citizens and watercraft from Ashland.

HIGHLANDS MUSEUM & Discovery Center

Showcasing History about:

- River Navigation
- Military and World Wars
- Industrial Development
- Schools in the Area



Country Music Heritage Displays and detailed artist information.



Historic Displays about the Ashland area

**ONE COMPLETE FLOOR
JUST FOR KIDS!**

EXPLORE INTERACTIVE & ROTATING EXHIBITS
THE ENTIRE FAMILY CAN ENJOY

1620 WINCHESTER AVE. ASHLAND, KY 41101
606-329-8888

WWW.HIGHLANDS MUSEUM.COM
Hours: Wed. & Fri. 10-4 Thurs & Sat. 10-8

Your **GOOD HEALTH** is Our **PRIMARY GOAL**

Whether you're a young adult starting out in life, or someone looking forward to retirement, you need a primary care provider to watch over your health. Whether it's care for basic things like colds, sore throats, sprains or strains ... or more complex issues like managing high blood pressure or diabetes...

KING'S
DAUGHTERS
MEDICAL SPECIALTIES

Prestonsburg

1279 Old Abbott Mtn. Road
kdmc.com/prestonsburg

We are here for you and your family.



MEET OUR PROVIDERS

Clayton Bowman, D.O.

Ashley Adams, D.O., MPH

Roger Jurich, M.D.

NEW PATIENTS WELCOME

Same-day appointments available, Walk-ins accommodated.

To learn more or to schedule, call (606) 886-1260.

You're Always Welcome in

Ashland, Ky



Attractions:

- Paramount Arts Center
- Highlands Museum & Discovery Center
- Jesse Stuart Foundation
- Pendleton Arts Center
- Central Park
- Rush Off Road Park

festivals like

SUMMER MOTION
POAGE'S LANDING
CATLETTSBURG LABOR DAY
WINTER WONDERLAND



Billy Ray Cyrus



The Judds

These Are Our Superstars

www.visitashlandky.com

or phone

1-800-377-6249

e-mail:

aacvb@visitashlandky.com

COME SEE US!



entertainment



ADVENTURE

Kentucky
UNBRIDLED SPIRIT

Ashland, Ky: A Beautiful, Vibrant City; The Pride of Northeast Kentucky

Ashland lies on the southern banks of the Ohio River. The city is positioned in the midst of an industrial area spanning from Huntington, W. Va. west thru Ceredo and Kenova on the West Virginia side. In Kentucky, this region takes in the historic town of Catlettsburg, north to Ashland, then on to Russell, Ky. The notable towns on the north side of the Ohio River are Chesapeake, across from Huntington, South Point, facing Ceredo and Kenova, and Ironton, directly across from parts of Ashland and Russell.

The area was built partly because of a major oil refinery south of Catlettsburg, its steel industry, and central train yard, roundhouse, and railroad maintenance shop operation at Russell.

Naomi and Wynonna Judd trace their roots to Ashland.

Billy Ray Cyrus started out a few miles to the north in the Greenup Co. community of Flatwoods. He is also the father of TV and rock star Miley Cyrus.

There are major riverside festivals each year in Ashland. The two biggest draws are Summer Motion around July 4th and Poage Landing Days in early September.

Visitors should be sure to enjoy the beauty of Central Park (pictured above). It dazzles with lush greenery in warm weather to the magnificent winter scenes and Christmas lights in winter.

Nationally known musical performers can be seen frequently at the Paramount Arts Center downtown. Additionally, they often showcase jazz and theatre performances.

The Pendleton Arts Center display the varied artistry in the region. The Steen Military Museum offers stirring displays of military hardware and history. It is located in the old Ashland post office.

Another leading attraction is the Highlands Museum and Discovery Center, full of local history spanning three floors on Winchester Avenue. They also have a popular floor just for kids.

Adventure is waiting at Rush Off Road trail just south of town, with a full schedule of trail rides on powersports vehicles year round.





JUST AS THE COUNTRY MUSIC HIGHWAY honors many artists from the region, just 15 miles south of the CMH on Ky. 80 in the Floyd Co. town named Eastern, travellers can see this tribute to another well known band, Goose Creek Symphony and founder Charlie Gear-

Highway Honors Legendary Band Goose Creek Symphony

It was the late '50s when Charlie Gearhart was attempting to fulfil his dream to make it big in music, and he performed under the name Ritchie Hart. He was a special guest on American Bandstand in 1959. The American Bandstand TV show got its start in Philadelphia before going national from 1952 until 1989 with famous host Dick Clark.

Charlie Gearhart is familiar with southern Floyd County and northern Knott County, especially the Goose Creek area. He named his famous band after this beloved region. In one of the group's most successful albums, Words

of Ernest, the songs extol the love for this part of the "hills of ole Kentucky." With the actual Goose Creek flowing nearby, the sign along Ky. Route 80 at Eastern, Ky indicates you are traveling on the Charlie Gearhart Highway. The region between the town of Eastern and Garrett is where the fabled creek is located. It is a tributary of Right Beaver Creek.

By 1970, The Goose Creek sound was so popularized they shared the stage with Jimi Hendricks at a festival in Atlanta and appeared on the Ed Sullivan Show.

The band's edgy sound crossed country lines, continued on page 23

*Eagle Ridge Golf Course at
Yatesville Lake State Park*

Take advantage of our *Getaway To Golf* overnight package or make online tee times at parks.ky.gov/golf.

- Driving Range
- Private Lessons
- Junior Clinics

Come for the golf: pack your hiking boots and fishing gear too!

- Campground
- Marina
- Hiking Trails

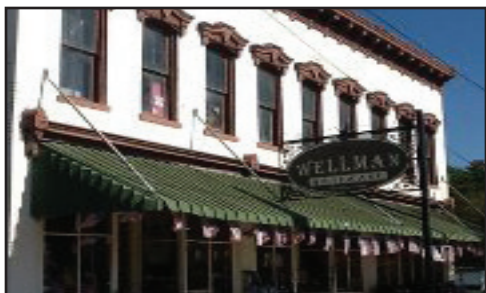
Call the Pro Shop:
606-673-4300

KENTUCKY STATE PARKS
"The Nation's Finest"

Kentucky
UNBRIDLED SPIRIT

Lawrence County

WHERE THE VALLEY MEETS THE MOUNTAINS



Historic building across from the court house is home for one of the oldest businesses in Louisa.



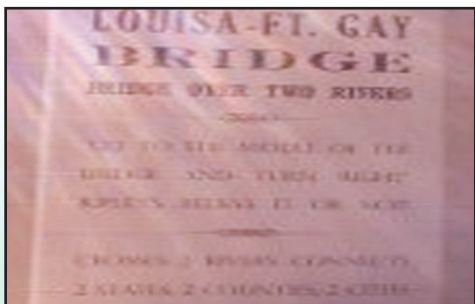
**Enjoy Downtown River Murals
Take Guided River Kayak Trips, lake
kayaking, rentals, and more
Legend Outfitters 606-253-8187**



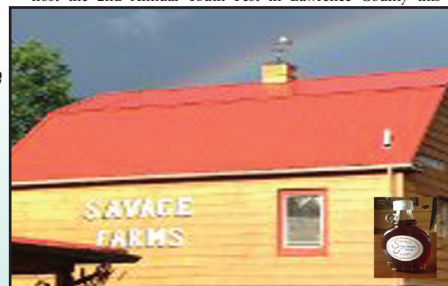
Get in on the great fishing at Yatesville Lake State Park.



The newest sensation in Lawrence County is First Time Around, a youth bluegrass band turning heads everywhere. Adrian, Savannah, Eden, Zach, and Justin, ages 12-18. They were featured in a showcase this year at the SPBGMA in Nashville and will host the 2nd Annual Youth Fest in Lawrence County this year.



An amazing bridge, connecting Kentucky with West Virginia, listed in Ripley's Believe It Or Not.



Visit Savage Farms, one of only 3 maple syrup producers in Kentucky. See the tree tapping process and watch syrup being made! Purchase fresh maple syrup, maple butter, candy, pies, jams, jellies, sorghum, and more. 606-686-1120

Lawrence County has country and bluegrass roots, and has produced music legends Ricky Skaggs and Larry Cordle. Kelsie May and Bobby Cyrus are also renowned performers from this county.

At the junction of the Ohio River Valley and the Appalachian Mountains, Louisa, the county seat, sits where the Levisa and Tug Fork Rivers join to form the Big Sandy. At Louisa's famous "Point Section" these two major rivers flow under the Louisa-Ft. Gay Bridge. This bridge is listed in Ripley's Believe It Or Not, because it's the only one in America where you can make a turn in the middle!

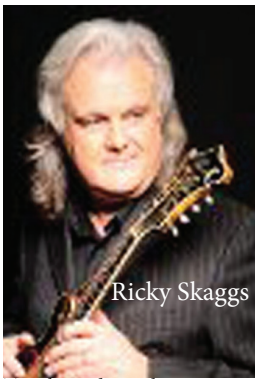
Be sure to visit the Fred M. Vinson Museum, named for the former U.S. Congressman, Supreme Court Chief Justice, and key advisor to Presidents Franklin D. Roosevelt and Harry S. Truman. The son of a County Jailer, Vinson began his career as an attorney in Lawrence County, Kentucky.

Adventures are all around, with camping, hiking, fishing, golfing, horseback riding, swimming and more! Unique top-rated attractions like the Fallsburg Fearplex and the Septemberfest beckon all who visit Lawrence County in the fall. Cycle along the Appalachian Bike Tour, and enjoy an old fashioned county fair. Whatever you choose to do, you're sure to have fun in Lawrence Co.

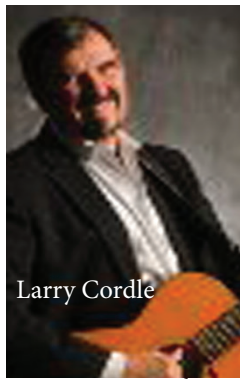
Lawrence County, Ky. Where Fun Happens In



Yatesville Lake State Park "Bass Capital Of Eastern Ky."



Ricky Skaggs



Larry Cordle

Two legendary Bluegrass performers grew up together in Lawrence Co. together. Both have made major impacts with their performances, songwriting, and instrumental skills. In 2015 Larry Cordle was inducted into the Kentucky Music Hall Of Fame. Ricky Skaggs was honored with a Lifetime Achievement Award in 2016.

Ours Is The Land of Three Rivers

Levisa Fork, Tug Fork, and Big Sandy all converge in Louisa. So come enjoy your kayak or canoe, and fish to your heart's content! Launch your boat beside our famous Louisa-Ft. Gay Bridge. Check out the old Number 3 Lock. The newest project is an ongoing scenic Riverwalk development.



17-year-old Kelsie May is on her way to stardom! Since last year's appearance on The Voice, she has performed with many well-known artists including JoDee Messina, Marty Stuart, Jewel, Montgomery Gentry, and has sold out venues with the legendary Ray Stevens. She will be playing all over the country this summer, including Las Vegas.

Attractions Everyone Must See!

Yatesville Lake State Park
Bass Capital of
Eastern Kentucky
2667 Pleasant Ridge Road
Louisa, KY 41230 (606)673-1492

Eagle Ridge Golf Course
Top 10 Kentucky
Golf Course

Lawrence County Park
And Campground
Cabins, RV & Tent Sites & more

'The Falls' Campground
"Mesmerizing"
6072 US Hwy 3
Louisa, KY 41230
(606)826-0212

Fred M. Vinson Museum

13th Chief Justice of
U.S Supreme Court
315 E. Madison St.
Louisa, KY 41230
(606)638-0078

KY Pavillion at Falls Creek
Country Music Highway
Welcome Center
52 Falls Creek & US 23
Louisa, KY 41230
(606)638-9999

Painted Cow Art Gallery
103 S. Main Cross
Louisa, KY 41230
606-638-1313

Louisa-Ft. Gay Bridge
Ripley's Believe It Or Not

Camp Caleb
3512 Left Fork Laurel Rd.
Blaine Ky 41124

(606)265-4151

Three Rivers Boat Launch
and Riverfront Mural
112 South Vinson Ave.
Louisa, KY

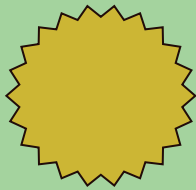
Outdoor Goods Annual
Swap Meet Spring Event
606-638-9676
brandon.meddings@
lawrence.kyschools.us

Fallsburg Fearplex
Weekends In October
(606) 686-3030

the "Heart of the Country Music Highway"

Eagle Ridge Golf Course

Events



Annual Dog Walk in the Park
May 21
Main Street Park
Downtown Louisa
606-483-2959

US 23 Yard Sale
Last weekend in May

Youth Fest Bluegrass Festival
June 18
Lawrence County
Park and Campground
Amphitheater
606-624-6976

Farm & Field Day
July 8 Blaine Community Center
(606) 673-9495

4th of July Celebration
Downtown Louisa
(606) 638-9889

"Cruise the Plaza" Cruise-In
Spring-Summer-Fall
606-859-229-9825

Lawrence County Fair
Summer Event
(606)624-7145

Septemberfest
September 9, 10, and 11
(606)471-9600

Blaine Autumn Fest
October Event
(606)939-4858

Heritage Harvest Tour
September 24 & 25
(606) 673-9495

Appalachian Bike Tour
September 24
(606)424-6816

Restaurants

CAMPING & LODGING

Dee's Drive Inn
(A Louisa Landmark since 1954)
109 E. Madison St.
Louisa, KY 41230
(606)638-4646

Milano Cucina (Italian)
102 Blair's Way
Louisa, KY 41230

Kentucky Fried Chicken
(Buffet)
2864 KY 25-65
Louisa, KY 41230
(606)638-9636

Down Home Grill
355 Public Way
Louisa, KY 41230
(606)638-0025

Dock's Pizza
"Best pizza and sandwiches on the Country Music Highway!"
8404 US 23
Louisa, KY 41230
(606)673-3333

Old China Buffet
168 Town Hill Rd.
Louisa, KY 41230
(606)638-0998

Giovanni's
403 N. Lock Ave
Louisa, KY 41230
(606)638-9053

Clifford Country Store & Deli
9958 S. Hwy 3
Louisa, KY 41230
(606)673-4167

Fallsburg Country Store & Restaurant
5913 KY Rt. 3
Louisa, KY 41230
(606)686-3131

B & C Market & Deli
"A Blaine tradition since 1966"
17727 Ky. 32
Blaine, Ky. 41124
(606)652-4352

Super 8 Motel
191 Falls Creek
Louisa, KY 41230
(606)638-7888

Best Western Plus
18199 U.S. 23
Louisa, KY 41230
(606)638-3420

Yatesville Lake State Park Campground
2667 Pleasant Ridge Road
Louisa, KY 41230
(606)673-1490

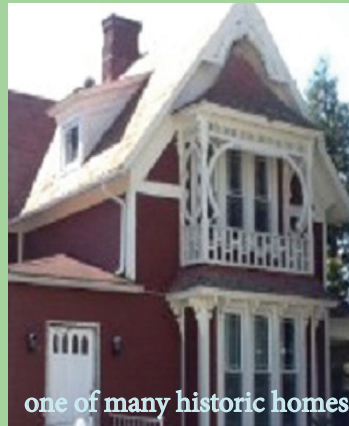
Joe's Lost Creek Cabins
740 US 23 Mile Marker #1

Ulysses, KY 41264
(606)297-5005

Lawrence County Park And Campground
Cabins, RV & Tent Sites

Falls Campground
US Highway 3
Fallsburg, KY 41230
(606)686-3398

Budget Inn Express Motel
(Under New Management)
117 East Madison St.
Louisa, KY
606-638-0229



one of many historic homes

Visit Lawrence County Park & Camground

You can pitch a tent, rent a cabin, or park your RV. Enjoy horseback, hiking and biking trails, a playground and beach area. Book your party or reunion at the conference center. A new miniature golf course will be featured this year.

Sundy Best Helps Flood Relief, Releases First Live Album

Sundy Best announces the release of their first live album April 22 titled "It's So Good LIVE, The band with Prestonsburg as their home town made a big splash with the song "Home" and its catchy lyrics about the mountains. One verse declares, "I was born here in Kentucky, where my soul rests in peace, I've been all around this world, there's no place I'd rather be....I wanna go home."

A gesture that proves their linkage to our Country Music Highway region was last July's free concert for the victims of the July 13 flood devastation along KY 172 in the Volga and Flat Gap area.

The band interrupted their tour schedule for the benefit concert.

Kris Bentley said, "People have each other's backs in this area and in Kentucky"

Nick Jamerson said "People need it now, it just had to happen."

Breaks Interstate Park Ranks Fourth In Virginia Tourism

Breaks Interstate Park made a 9.95 Million economic impact in southeast Kentucky and southwest Virginia last year. Park Superintendent Austin Bradley comments, "The downturn in the coal business has gravely impacted the local economy in our area. In response, we have searched for new ways to reposition our area as a tourist destination."

Last year the park served 357,993 day-use and overnight visitors. The positive effect on the surrounding economy

Their free show happened in the parking lot of Johnson Central High School in Paintsville.

Sundy Best got their name from the phrase "Sunday Best" meaning you put your best foot forward, so to speak. They started out as a Christian rock band. The band was named one of the Hot New Bands in 2014 by CMT.

They have had three previous top 40 albums. "Bring Up The Sun" peaked at #11 on the country charts.

Fans will notice Bentley plays a cajon, or cahone (cuh-hone) which is a wooden box drum, giving the group a unique beat and sound.

The duo began playing together their senior year in high school. They moved to Lexington in 2010.

Bentley says, "We always wanted to do this." Jamerson adds, "We both write together and do everything together."



Louisa Super 8



**191 Falls Creek Drive
Junction of Hwy 23 and 3
Louisa, KY 41230
(606) 638-7888**

- ◆ **Free SuperStart Breakfast**
- ◆ **Whirlpool Suites**
- ◆ **Free Wireless Internet**
- ◆ **Copy & Fax Service**
- ◆ **Large Vehicle Parking**

See you along the waySM

1.800.800.8000 super8.com

Paintsville Operating Stafford House As Latest Tourist Attraction

The Stafford House in downtown Paintsville has been a project among many historic preservationists for over a decade before the Paintsville Main Street and Paintsville Tourism stepped up in 2015 to assume operation

Charlie Gearhart And Goose Creek

continued from page 18
jazzy overtones on many tunes. They also sang about mountain themes and their love of their east Kentucky roots.

of the 1840s era house as a tourist attraction.

Now owned by the city of Paintsville, the home has benefited from preservation efforts put forth by a team of volunteers and application of public resources. The home has now been open for tours and has been the site of many special events.

The Stafford House was the original home of Paintsville businessman F. M. Stafford and family. Stafford was a key businessman in Paintsville through the Civil

War era and beyond.

The house has been the object of guided tours for the past few years, and even more so during the 2015 Apple Festival in early October. Later the same month, the

house was decorated as a pumpkin house during the weeks before Halloween. Then, during Christmas in Downtown, the house hosted a social event tied into the official downtown parade in early December.

Road To Fame Talent Search Returns

The Fifth Road To Fame Talent Search will be held again throughout the Country Music Highway region, in another search in the rich talent mine that this area contains. Auditions will be in April. Six communities

will host the auditions: Hazard, Pikeville, Prestonsburg, Louisa, Ashland, and Paintsville. For further information, contact the tourism office in Prestonsburg 886-1341, or the tourism offices in any of the audition towns.



Serving Delicious Homestyle Breakfast, Lunch & Dinner!
 Sunday - Thursday 7am-9pm Friday & Saturday 7am-10pm

www.pinemountaingrill.com
 Dine In - Carry Out 45 Highway 119 South • Whitesburg, KY 606-633-1183

LETCHER CO. WILL

events

Artwalk ATV Blackey Days Coal Miner's Memorial Weekend Cowan Creek Music School
Farmer's Market Saturday mornings June thru October 9 a.m. til noon Fourth Of July Weekend
Heritage 2K Mini Truck Show Horse Trail Isom Days Jenkins Homecoming Days Kids Days
McRoberts Days August 4,5, & 6 Mountain Heritage Festival September 19-24 Neon Area Days
Oktoberfest Pine Mountain Summit Challenge August 27 bicycle race Thunder On The Mountain

attractions

ANTIQUE ALLEY HWY 7 SOUTH

Indoor Flea Market at Isom
Gwen's Country Antiques
Deanna's Little Shoppe
Addie's Treasures
Rusty Rooster
Bows and Barns

HIGHLANDS WINERY 193 SECO DRIVE, SECO, KY 606-855-7968

KENTUCKY MIST MOONSHINE 128 East Main St. Whitesburg, KY 606-633-8886

SCENIC TOURISM

ATV TRAILS- FISHPOND TRAIL HEAD

BAD BRANCH FALLS

BROTHERS ONCE MORE MEMORIAL at POUND GAP

CARCASSONNE SQUARE DANCE

FISHPOND LAKE

GO-CART TRACK AT ISOM

LETCHER COUNTY RECREATION CENTER

LILLY CORNETT WOODS

LITTLE SHEPHERD AMPHITHEATRE

LITTLE SHEPHERD TRAIL

PINE MOUNTAIN TRAIL

PIONEER HORSE TRAIL

RAVEN ROCK GOLF COURSE

VETERAN'S MUSEUM AND MEMORIAL PARK

WORLD WAR II MEMORIAL MAIN STREET, JENKINS



Kentucky Mist Moonshine

MAKE YOUR DAY!

PLACES TO SHOP

Annie's Frugal Finery
Bella's Home Furnishing
Busy Bee's
Cozy Corner
Deanna's design
John B. Adams Store
DRY Fork Vendors Mall
Farmer's Market
Frans's
Frazier's Farm Supply
Hobgoblins
Indoor Flea Market at Isom
Letcher County Co-op
Mert's ATV
Mountain Vendors Mall
Neon Vendor's Mall
Omni Gallery
Ovenfork Merchantile
Phyll's Designs
Pine Mountain Outfitters
Pine Mountain Grill-Gift Shoppe
Roundabout Music Co.
Southern Bliss
Sports-R-Us



PLACES TO EAT

HALCOMB'S DAIRY BAR
HERITAGE KITCHEN
260 Main St. Whitesburg
606-536-5052
heritagekitchen.com
ICING ON THE CAKE
JOE PACK'S CHICKEN
JUMBO HOUSE
LAS PENAS
Jenkins and Whitesburg
PARKWAY INN RESTAURANT
PINE MOUNTAIN GRILL
STREET SIDE
Music Venue
SUMMIT CITY LOUNGE
THE THIRSTY HEIFER

PLACES TO STAY

HIGHLANDS WINERY
PARKWAY INN
3749 HWY 15
Whitesburg, KY 41858
(606) 633-4441
STUART ROBINSON SCHOOL
WHITESBURG MOTEL
107 Medical Plaza Lane
Whitesburg, KY 41858
(606) 633-8888

PRIMITIVE CAMPING

CAMPBELL'S BRANCH COMMUNITY CENTER
KINGDOM COME COMMUNITY CENTER
WILEY'S LAST RESORT
US 119 South-Pine Mountain
(606) 633-7006
RV CAMPGROUND
Fish Pond Lake-13 RV Slips
(606) 633-2129 for reservation.
\$22.00 per night



CHRIS STAPLETON ENJOYING RISE IN POPULARITY AND INDUSTRY HONORS

continued from page 12 like Trace Adkins and “Swing”, Luke Bryan’s “Drink A Beer”, “Your Man” as recorded by Josh Turner, and Darius Rucker’s “Come Back Song”. His “Never Wanted Nothing More” was recorded by Kenny Chesney.

Stapleton is associated with the Universal Music of Nashville.

Fans like Stapleton’s powerful vocal delivery, and his versatility to move across many genres.

Here is a complete list of hits penned by Stapleton,

and the superstars who performed these songs:

2003: “Higher Than the Wall” recorded by Patty Loveless, written with Mike Henderson

2005: “Your Man” recorded by Josh Turner, written with Chris DuBois and Jace Everett

2006: “Nothin’ but a Love Thang” recorded by Darryl Worley, written with Steve Leslie

2006: “Swing” recorded by Trace Adkins, written with Frank Rogers

2007: “Never Wanted Nothing More” recorded by Kenny Chesney, written with Ronnie Bowman

2007: “Whiskey and You”

recorded by Tim McGraw

2008: “Another Try” recorded by Josh Turner with Trisha Yearwood, written with Jeremy Spillman

2008: “Either Way” performed by Lee Ann Womack, written with Tim James and Kendall Marvel

2010: “Come Back Song” recorded by Darius Rucker, written with Casey Beathard and Rucker

2010: “Keep On Lovin’ You” recorded by Steel Magnolia, written with Trent Willmon

2011: “If It Hadn’t Been for Love” recorded by Adele co-written with The Steel-Drivers’ Mike Henderson

2011: “Miles to Go” recorded by Alison Krauss and Union Station, written with Barry Bales

www2011: “Love’s Gonna Make It Alright” recorded by George Strait, written with Al Anderson

2012: “Talk Is Cheap” performed by Alan Jackson, written with Guy Clark and Morgane Hayes

2013: “Drink a Beer” recorded by Luke Bryan, written with Jim Beavers

2015: “Crash and Burn” recorded by Thomas Rhett, written with Jesse Frasure.

CMH TRAVEL GUIDE



Wherever you travel throughout Southeast Kentucky, there’s a Double Kwik convenience store to serve you.

For 50 years our customers have counted on us for a friendly welcome, high quality fuel, fresh brewed coffee and clean restrooms. If you come hungry, you won’t leave that way! From fresh made biscuits, grab & go sandwiches and salads to fresh fried chicken and all the fixin’s, we’ve got you covered! And don’t forget to try a pizza roll, our signature item. We’re so much more than a convenience store. We’re Double Kwik!

Loretta Lynn's Home Town Is the Scene For Web Series and TV Show Pilot

Van Lear has become a key site for active filming of a web series and pilot TV show in recent weeks. Shooting has been going on for several weeks prior to a brief halt, and will resume in mid-April.

The program is titled Fifth Hollar, and is produced by Big Jester Productions from central Kentucky and the Lexington area. The principals in the firm are Graham Martin, and husband and wife team, Jan and Kirk Lewis.

The theme of the program centers around kidnapped high school girls and their efforts to break free in a fictional Kentucky town called Raylin. (Van Lear).

Big Jester Produc-

tions hopes to market the show to the Sci-Fi channel or Netflix.

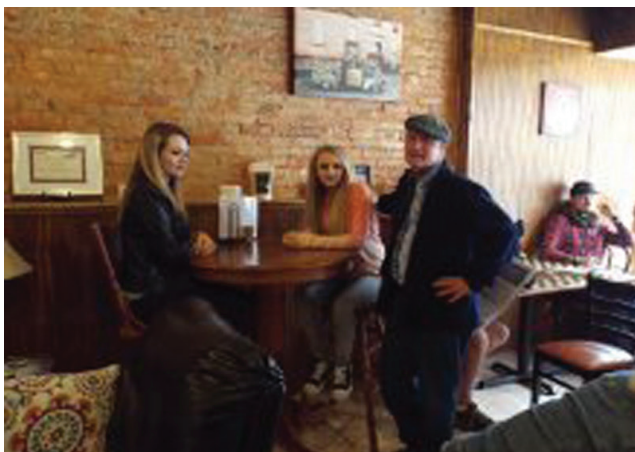
An original pilot for the show has now been remade and augmented, and should be on You Tube before long.

Shooting has happened in Van Lear's Coal Miner's Museum and the old school at Butcher Hollow, just below Loretta Lynn's homeplace, and in downtown Paintsville at the Espresso Café, sheriff's office, and attorney's office on Main Street.

Locals have been used in the making of the program, including Rick Roberts, Chad M. Horn, Madison Webb, Shelby Castle, Terry Salyers, Billy Meade, Eli Harrington and others.

Tourist Information Options...

www.facebook.com/CountryMusicHighway
and www.countrymusichighway.com



FILM CREW going over the next scene at the Fifth Hollar project, filmed in Van Lear and Paintsville.



A pause for Madison Webb and Shelby Castle filming a shoot in a downtown Paintsville cafe.

Van Lear: the town everyone wants to see!

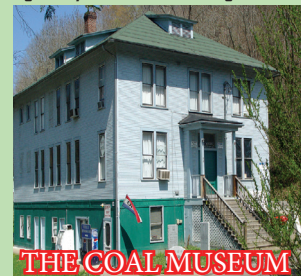
- a world famous coal town
- home of Loretta Lynn and Crystal Gayle
- Butcher Hollow
- #5 General Store

Van Lear Days
First Weekend
In August!
You'll Love It!!

live music, food, parade,
car show, games, cornhole,
Van Lear Idol contest, turkey
shoot, & ghost tours.
HAUNTED MUSEUM
DURING THE LAST FOUR
WEEKENDS IN OCTOBER



Tourists always enjoy Lcky's, the town's legendary restaurant and hangout.



THE COAL MUSEUM



See this detailed replica of the boom town built by Van Lear coal mines.

learn all about life in a model coal town

www.VanLearKentucky.com

VanLearTourism@yahoo.com

Phone: (606) 789-8540

**For Nearly A Decade:
Thursdays Are Always
Busy Thanks To
Front Porch Pickin’**

It was 2007 when Front Porch Pickin’ began at the Country Music Highway Museum in Paintsville. The multi-purpose CMH Museum has been the site for a number of country music shows, weddings, conferences, holiday parties for small groups and large public and private corporations since it began in the spring of 2005.

Originally, the admission to these Thursday night events was one dollar per person. The audience grew steadily until a capacity crowd could be found almost any week. Music lovers from all around came to hear eager singers, musicians, and bands take their turns on stage for a 20 to 30-minute set.

In a few more years, the admission price climbed to three dollars, but still remained the best bargain in the region.

The Country Music Highway staff have always sold a good variety of concessions.
continued on page 31



Brand New Museum Displays Added For Chris Stapleton and Larry Cordle

The Country Music Highway Museum located just outside of Paintsville has accomplished an expansion in the number of display items and an increase in new space devoted to two additional artists. Tourists can now enjoy additional mementos that were recently donated by Tom T. Hall, The Storyteller. The newest items now on display were personally brought to Paintsville by two of Hall’s associates from Nashville on January 27.

Plans were set in motion early this year to add two brand new sections to the museum’s displays. Chris Stapleton and Larry Cordle will be afforded their own showcases chronicling their career

accomplishments thus far.

The Country Music Highway Museum opened in April of 2005, and Hall was in attendance during the ribbon cutting ceremony along with Congressman Hal Rogers, regional dignitaries, tourism officials, and music fans.

From the beginning, the museum included memorabilia from superstars like Loretta Lynn, Crystal Gayle, Tom T. Hall, Keith Whitley, Ricky Skaggs, Billy Ray Cyrus, Hylo Brown, Dwight Yoakam, Patty Loveless, Gary
continued on page 31



Downtown Paintsville’s historic Sipp Theater is getting a facelift, and going back to its original look. The box office is being reconstructed, and a close model of the original marquee hangs over the sidewalk again.

New Museum Displays

continued from page 28
Stewart, Rebecca Lynn
Howard, and The Judds.

The new custom built
showcase will highlight
Chris Stapleton on one
side and Larry Cordle on
the other. These newer
displays will be locat-
ed right in the middle
of the existing displays
inside the museum, lo-
cated at Staffordsville
just west of the Paints-
ville city limits, right be-
side US 23 at the Paints-
ville-Salyersville exit.

Stapleton began to
take country music by
storm in the autumn of
2015, and continues to
shine brightly after gath-
ering Grammy and Acad-
emy of Country Music
awards in recent months.

Cordle, who grew up
in the Blaine region of
southwestern Lawrence
County not far from life-
long friend Ricky Skaggs,
is known for a successful
career in bluegrass mu-
sic, and as a songwriter.
He authored "Murder
On Music Row" an Alan
Jackson and George
Strait hit. He was also a
Grammy winner in 2004
for Album Of The Year.

The Country Music
Highway doubles as a
venue for special events,
weddings, reunions,
company meetings, mu-
sic shows and such. The
regular hours are 9 to 5
Monday thru Saturdays.

One of the most
popular events is the
Thursday evening Front
Porch Pickin'. The
people who desire to
continued on page



The Oil Springs Cultural Arts and Recreation Center was

founded for the preservation of the diverse and traditional arts which have long influenced the region. The Center provides hands-on opportunities weekly throughout the year for persons interested in visual arts such as stained glass, painting, basketry, quilting, sewing, jewelry making, pottery, ceramics, and heritage skills.

With the hand painted mural painted hallways and dining area, it remains one of the most interesting and alluring places to see. The O.S.C.A.R Center gets involved with locally produced food along with experiences such as the Story Patch Theater and other performing arts opportunities.

Conferences, weddings, meetings, and trainings are all available in this authentic center, which originally served as the Oil Springs High School and Elementary School, and features one of the most unique entertaining and interactive places that people can engage in.

Come enjoy our original getaway and experience true art! For more information on events and activities and availability, contact 606-297-7775 or 606-789-8108 or visit us on Facebook.

The OSCAR is located 9 miles west of Paintsville and is accessible by KY 40, or from U. S. 460 to KY 580, then west about a half-mile to the site.



The OSCAR BUILDING IS SPACIOUS and makes a great family destination. It has grown steadily for over a decade. They offer mamany special events.



**These Stars Made Us
The Country Music Highway!!
We'll Always Be Grateful.**

clockwise from top: Loretta Lynn, Crystal Gayle,
Tom T. Hall, Ricky Skaggs, The Judds, Gary Stewart,
Hylo Brown, Keith Whitley, Patty Loveless,
Dwight Yoakam, and Billy Ray Cyrus

StoneCrest Golf Course

**18 Hole
Championship
Course**

Owned and Operated by the
City of Prestonsburg

- ◆ Fully stocked Pro Shop
- ◆ Lessons Available
- ◆ Driving Range
- ◆ Practice Greens
- ◆ Restaurant

For Tee Times Call 606-886-1006
918 Clubhouse Drive
Prestonsburg, KY 41653

www.StoneCrestGolfCourse.com

Photo courtesy Allen Bolling
ABProPhoto.biz

Tim Bentley's Journey Into Sudden Fame And Music Career Possibilities

continued from page twelve
three sons and his wife, Jackie, encouraged him to pursue his music. She took a job at a restaurant and earned enough money to "get by".

"Now I'm making a little money," he said. "At age 43, I am focused on feeding my family."

He performed at Prestonsburg's Songwriters' Night and has done at least one acoustic set at the Bank 253 Restaurant in downtown Pikeville.

He says it's gratifying to see how his music has touched so many lives.

For Nearly A Decade: Thursday Nights Are Big Because Of Front Porch Pickin'

continued from page 28

Front Porch Pickin' has the distinction of being a consistently popular way to get together in a nice place for a couple of hours or more of excellent music, while having access to excellent food, snacks, desserts, and drinks.

As they say, "bring your instrument(s) and come on down".

For any questions about this 7 p.m. weekly event, call Paintsville Tourism at 606-297-1469.

Museum Exhibits

continued from page 28 and music. Individuals and groups are welcome to bring their instruments and take the stage.

The admission price for Front Porch Pickin' is an exceptional bargain at \$3.00 per person.

He has been getting a barrage of messages every day and it takes him a few hours to answer them all.

"I will be playing in Louisville for a cancer benefit on May 21," he said. "I got a message from the family of a two-year-old boy named Parker Loudermilk, and he has cancer. They asked me to sing the "Fight Song on his page."

The next morning, it was an even larger avalanche of messages.

"Cancer has touched us all in one way

Canoe Race Planned

The Big Sandy River between Prestonsburg and Paintsville will accommodate dozens of canoe racers Saturday, April 30 in a special 5K event.

This event is coordinated by the Friends of Middle Creek. This group of historians produce a Civil War Re-enactment each September beside Ky 114 west of Prestonsburg. The original battle, known as the Battle Of Middle Creek was fought between two sizeable armies on January 10, 1862.

The canoe race launch will be in downtown Prestonsburg behind Billy Ray's Restaurant on Court and Main St. and continue downriver in a northerly direction to Paintsville's boat ramp beside the city water plant.

Entry fee is 30.00 and will include a token for participation.

or another, and I'd like to help in any way I can."

Bentley is a cheerful, clear-eyed realist. He knows he just might make it big, but if he doesn't he will be content to keep playing his music, and he also hopes to develop as a songwriter. His rankings online among 2.5 million fans in early April was #1 in Kentucky, 5th in the Region, and 56th in the world. 2.7 viewers have seen his SMULE duet with

Cam on Burning House.

"Yes, I was so surrounded by music and living room singings, I was up in years before I learned that everybody couldn't sing," he recalled with a laugh. "Since everybody couldn't sing the lead, we all had to learn harmony."

I've always been pleased to born and live in an area like this."

Bentley's Facebook fan page is www.facebook.com/FriendsOfTimBentley.

**JENNY WILEY
STATE RESORT PARK**

Visit Jenny Wiley and surround yourself with unmatched beauty. Dine at the May Lodge, have fun on the water, and hear some uplifting live music of the Country Music Highway!

- Boating
- Hiking
- Biking
- Marina
- Camping
- Dining
- Lodging
- Live Music

75 Theatre Court | Prestonsburg, KY | 800-325-0142
Lodging, dining, and event information at parks.ky.gov.

KENTUCKY STATE PARKS
"the nation's finest"

The advertisement includes three photographs: a scenic view of a forested hillside overlooking a river, a group of people sitting at tables on an outdoor patio with a stone wall, and a view of a building with a covered entrance, likely the May Lodge.

Hometown Family Care

Janey Watts, MPH, DO



Services

- Diabetes & Endocrinology
- General Illness
- Osteopathic Manipulative Treatment (OMT)
- Preventative Medicine
- Thyroid Issues
- Women's Health



Hometown Family Care

Janey Watts, MPH, DO

Highlands Medical Office Building

713 Broadway Avenue, Suite 310B

Paintsville, KY 41240

HRMC.org

(606) 789-0082



Stroke Care Network

